

Gear racks

Standard and customized

Latest version of the catalogs

You can always find the latest version of our catalogs in the Download area of our website.

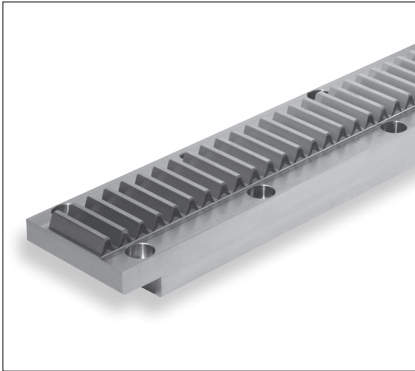
Disclaimer

This publication has been compiled with great care and all information has been checked for accuracy. However, we can assume no liability for incorrect or incomplete information. We reserve the right to make changes to the information and technical data as a result of enhancements to our products. Reprinting or reproducing, even in part, is not permitted without our written consent.



Table of contents

	Page number
1 Overview	4
1.1 Range of versions	4
1.2 Properties of the gear racks/ conversion	5
1.3 Conversion/ hardness/ strength	6
1.4 Fields of application	7
2 Technical principles	8
Standard gear rack	8
2.1 Module pitches Q5 - Q11, helical toothed	8
2.2 Module pitches Q5 - Q11, straight toothed	15
2.3 Q6 metric pitch, straight toothed	22
2.4 Q6 stainless steel, helical toothed metric pitch	23
2.5 Q6 stainless steel straight toothed module pitch	24
2.6 Q6 stainless steel, straight toothed, metric pitch	25
Customised gear racks	26
2.7 Customised gear racks	26
3 Installation	27
3.1 Gear rack fitting instructions / lubrication	27
4 Order description	28
4.1 Standard gear racks	28
4.2 Customised gear racks	29
5 Quality	30
5.1 Quality	30



Gear racks

Gear rack drives main feature is their high level of efficiency. They are the best choice for high axial forces.

This drive rigidity is constant over the whole length.

They are also very cost effective for long strokes of more than 2m.

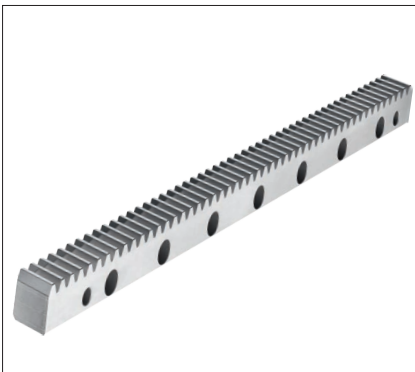
With a rack and pinion system a slideway is driven by the pinion running on a fixed gear rack.

There is a basic difference between straight and helical toothed gear racks.

Apart from typical dimensions, SCHNEEBERGER offers any cross sections with metric or module pitches. The max. one-piece length is 3000 mm. Joining with butt joints is possible for longer lengths.

The tooth rack can be milled or ground depending on the customer's requirements. A particular feature is that different materials and hardening processes can be used. Depending on the load to be applied you have a choice of soft, induction or case hardened or nitride hardened gear racks.

Skill and expertise are our strengths!



Standard gear racks

Straight and helical toothed gear racks are available in typical industrial dimensions from module 2 to module 12. Different materials, hardnesses and accuracy are available depending on the load to be applied.



Customised gear racks

You need a gear rack but standardised dimensions do not fit your system?
No problem.

You can have any gear racks up to module 16. The maximum one-piece length is 3000 mm.

The customer can choose from different materials and therefore configure the gear rack just as required.

Special is our standard.

1.2 Overview

Properties of the gear racks/ conversion

Modular tooth pitch (-M)

Tooth rack	Material condition	Material	Modules	max. length for following qualities							
				Q4	Q5	Q6	Q7	Q8	Q9	Q11	
helical (-S-)	soft (-W-)	C45, 42CrMo4 V, 16MnCr5	2 ... 16	1000	2000	3000	3000	3000			
	induction hardened (-I-)	C45, 42CrMo4 V	2 ... 16	1000	2000	2000	2000				
			2 ... 4						3000		
	case hardened (-C-)	16MnCr5	2 ... 16	1000							
			2 ... 3		1500	1500	1500				
	4 ... 16		2000	2000	2000						
nitrided (-N-)	42CrMo4 V, 16MnCr5	2 ... 16						2000			
through hardened (-H-)	X90CrMo V18	2 ... 5	1000	1000	1000	1000					
straight (-G-)	soft (-W-)	C45, 42CrMo4 V, 16MnCr5	2 ... 16	1018	2035	3000	3000	3000			
	induction hardened (-I-)	C45, 42CrMo4 V	2 ... 16	1018	2035	2035	2035				
			2 ... 4						3000		
	case hardened (-C-)	16MnCr5	2 ... 16	1018							
			2 ... 3		1522	1522	1522				
	4 ... 16		2035	2035	2035						
nitrided (-N-)	42CrMo4 V, 16MnCr5	2 ... 16						2035			
through hardened (-H-)	X90CrMo V18	2 ... 5	1018	1018	1018	1018					

Metric tooth pitch (-T)

Tooth rack	Material condition	Material	Pitch (mm)	max. length for following qualities						
				Q4	Q5	Q6	Q7	Q8	Q9	Q11
straight (-G-)	soft (-W-)	C45, 42CrMo4 V, 16MnCr5	5 ... 20	1018	1018	3000	3000	3000		
	induction hardened (-I-)	C45, 16MnCr5	5 ... 20	1018	1018	2035	2035			
			5 ... 10						3000	
	case hardened (-C-)	16MnCr5	5 ... 20	1018						
			5 ... 12,5		1522	1522	1522			
	15 ... 20		2035	2035	2035					
nitrided (-N-)	42CrMo4 V, 16MnCr5	5 ... 20						2035		
through hardened (-H-)	X90CrMo V18	5 ... 15		1018	1018	1018				

Cross reference of material designations

Germany		Japan	USA	China	Special properties
W.-Nr.	DIN	JIS	AIS/SAE	GB	
1.0503	C45	-	1045	45	
1.7131	16MnCr5	-	5115	18CrMn	can be welded
1.7225	42CrMo4 V	SCM 440 (H)	4140	42CrMo	
1.4112	X90CrMo V18	SUS 440B	440B	9Cr18 oV	Stainless steel

1.3 Overview

Conversion/ hardness/ strength

Converting a module m into a pitch p (straight toothed) and front pitch p_s for helical tooth racks

Module m	2	3	4	5	6	8	10	12	16	20
Pitch p (mm)	6,28	9,42	12,57	15,71	18,85	25,13	31,42	37,70	50,27	62,83
End pitch (p_s)(mm)	6,67	10,00	13,33	16,67	20,00	26,67	33,33	40,00	53,33	66,67

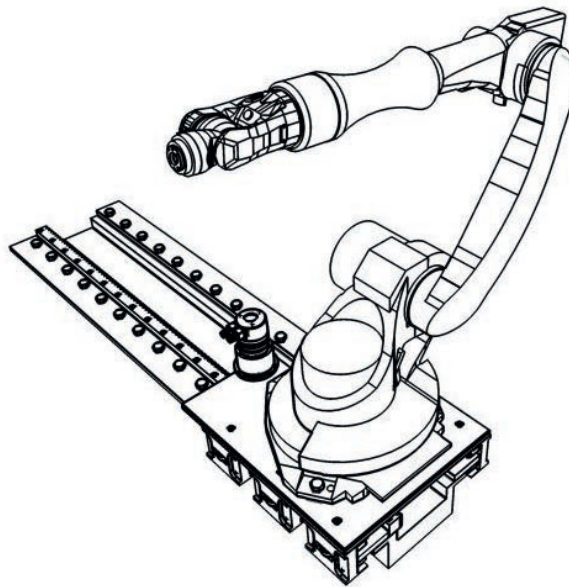
¹⁾ where $\beta=19.5283^\circ$

Converting pitch p (straight toothed) into a module m

Pitch p (mm)	5.00	7.50	10.00	12.50	15.00	20.00
Module m	1.59	2.39	3.18	3.98	4.77	6.37

p Pitch in mm
 p_s End pitch in mm
 m Module

β Helix angle
 $p=m \cdot \pi$
 $p=m \cdot \pi / \cos \beta$



Hardness/ strength of tooth rack

Condition of teeth	Material	Tensile strength R_m N/mm ²	Hardness	
			HRc	HV1
soft	C45	~650		
tempered	42CrMo4 V	max. 1000		
induction hardened	C45		55 ... 60	
	42CrMo4 V		59 ^{±3}	
case hardened	16MnCr5		58 ^{±3}	
nitrided	42CrMo4 V, 16MnCr5			550..700
through hardened	X90CrMoV18		56 ^{±2}	

CUSTOMER-SPECIFIC BEARINGS AND GEAR RACKS

Exploring new shores.

When research vessels investigate climate change in the Antarctic, Schneeberger has already played its part in the expedition.

Our linear motion technology makes an important contribution in the construction of large ships and their drive systems in particular. Gigantic crankshafts and driveshafts are turned, milled, ground and repaired on large, multipurpose extended-bed lathes – with exacting tolerances despite a 40 metre stroke. When our customers approach us about applications such as this, we respond with custom bearings and gear racks. We also supply components for use in electricity generation, for example in the manufacturing of rotor heads or gears for wind turbines. This means we can make our own contribution to exploiting new sources of energy.

Our custom bearings and gear racks can be used in any application

where standard bearings do not meet the machine builder's requirements due to size or accuracy. The results are customer-specific, innovative solutions.

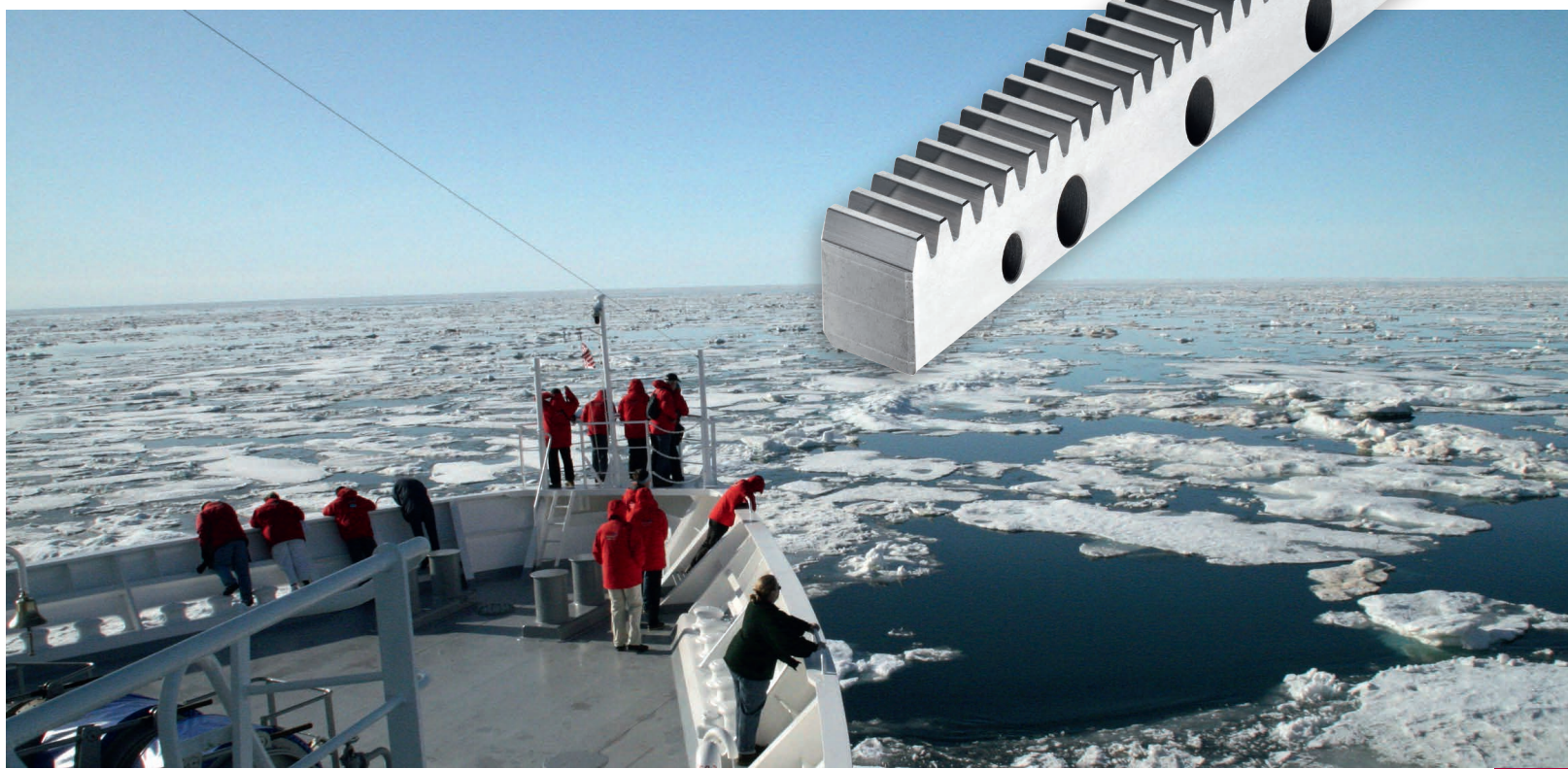
We can create guideways with running characteristics, with exceedingly high rigidity or with extremely high load carrying capacities. When you come to Schneeberger, you do not have to accept any compromises. Our universal machine pool and highly competent engineers allow us to respond to complex customer demands for products both quickly and efficiently. Initially in small batches for prototype requirements, and then in larger series volumes, guaranteeing consistently high quality and a reliable, secure source of supply.



Typical applications

Gear racks provides users with definite competitive advantages in the following industries:

- Machine tools
- Heavy machine construction
- Automation and robotics
- Material handling and material flow systems
- Machine and plant engineering
- Packaging machines
- Printing presses



2.1 Technical principles

Module pitches helical toothed

Tooth rack: Pressure angle $\alpha = 20^\circ$
ground, soft or hardened

Outer surfaces: ground on all sides

Quality: 4 in accordance with DIN 3962, 3963, 3967

f_p (mm) Single pitch deviation
Module ≤ 3 : 0.003
Module > 3 : 0.0804

F_p (mm) Total pitch deviation
 $F_p/1000$ (mm) 0,015 for a 1000 mm Length

Fig. 1

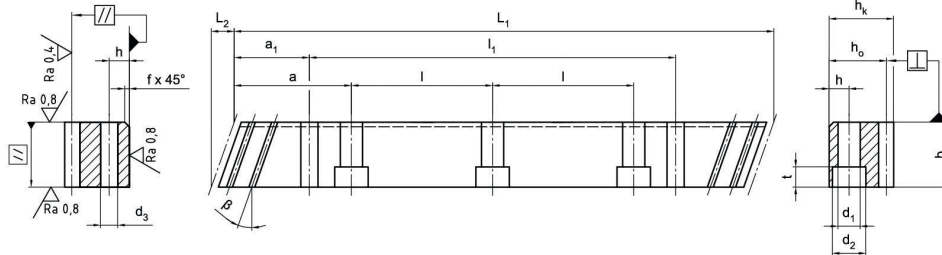


Fig. 2

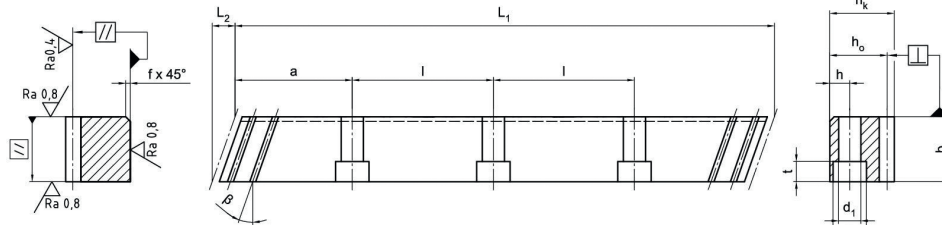
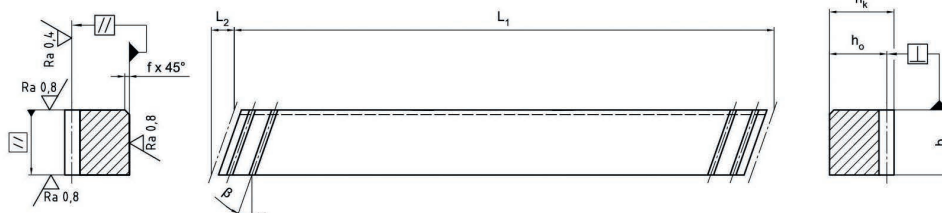


Fig. 3



Standard lengths	m ¹⁾	p_s ⁴⁾	L_1	L_2	z ²⁾	b	h_k	h_o	f	a	l	n ³⁾	h	d_1	d_2	t	a_1	l_1	d_3	Dimensions
	-	mm	mm	mm	-	mm	mm	mm	mm	mm	mm	-	mm	mm	mm	mm	mm	mm	mm	kg
ZST M2 - 24 x 24 x 1000 - S	2	6.67	1000.0	8.5	150	24	24	22	2	62.5	125.00	8	8	7	11	7	31.7	936.6	5.7	4.1
ZST M2 - 24 x 24 x 2000 - S	2	6.67	2000.0	8.5	300	24	24	22	2	62.5	125.00	16	8	7	11	7	31.7	1936.6	5.7	8.2
MST M2 - 24 x 24 x 200 - SL	2	6.67	200.0	8.5	30	24	24	22												0.8
ZST M3 - 29 x 29 x 1000 - S	3	10.00	1000.0	10.3	100	29	29	26	2	62.5	125.00	8	9	10	15	9	35.0	930.0	7.7	5.9
ZST M3 - 29 x 29 x 2000 - S	3	10.00	2000.0	10.3	200	29	29	26	2	62.5	125.00	16	9	10	15	9	35.0	1930.0	7.7	11.8
MST M3 - 29 x 29 x 200 - SL	3	10.00	200.0	10.3	20	29	29	26												1.2
ZST M4 - 39 x 39 x 1000 - S	4	13.33	1000.0	13.8	75	39	39	35	3	62.5	125.00	8	12	10	15	9	33.3	933.4	7.7	10.7
ZST M4 - 39 x 39 x 2000 - S	4	13.33	2000.0	13.8	150	39	39	35	3	62.5	125.00	16	12	10	15	9	33.3	1933.4	7.7	21.4
MST M4 - 39 x 39 x 200 - SL	4	13.33	200.0	13.8	15	39	39	35												2.2
ZST M5 - 49 x 39 x 1000 - S	5	16.67	1000.0	17.4	60	49	39	34	3	62.5	125.00	8	12	14	20	13	37.5	925.0	11.7	13.0
ZST M5 - 49 x 39 x 2000 - S	5	16.67	2000.0	17.4	120	49	39	34	3	62.5	125.00	16	12	14	20	13	37.5	1925.0	11.7	26.0
MST M5 - 49 x 39 x 200 - SL	5	16.67	200.0	17.4	12	49	39	34												2.7
ZST M6 - 59 x 49 x 1000 - S	6	20.00	1000.0	20.9	50	59	49	43	3	62.5	125.00	8	16	18	26	17	37.5	925.0	15.7	18.1
ZST M6 - 59 x 49 x 2000 - S	6	20.00	2000.0	20.9	100	59	49	43	3	62.5	125.00	16	16	18	26	17	37.5	1925.0	15.7	36.2
MST M6 - 59 x 49 x 200 - SL	6	20.00	200.0	20.9	10	59	49	43												3.8
ZST M8 - 79 x 79 x 960 - S	8	26.67	960.0	28.0	36	79	79	71	3	60.0	120.00	8	25	22	33	21	120.0	720.0	19.7	42.5
ZST M8 - 79 x 79 x 1920 - S	8	26.67	1920.0	28.0	72	79	79	71	3	60.0	120.00	16	25	22	33	21	120.0	1680.0	19.7	85.0
MST M8 - 79 x 79 x 213 - SL	8	26.67	213.3	28.0	8	79	79	71												8.9
ZST M10 - 99 x 99 x 1000 - S	10	33.33	1000.0	35.1	30	99	99	89	3	62.5	125.00	8	32	33	48	32	125.0	750.0	19.7	68.7
MST M10 - 99 x 99 x 233 - SL	10	33.33	233.3	28.0	7	99	99	69												10.2
ZST M12 - 120 x 120 x 1000 - S	12	40.00	1000.0	42.6	25	120	120	108	3	40.0	125.00	8	40	39	58	38	125.0	750.0	19.7	111.0
MST M12 - 99 x 99 x 280 - SL	12	40.00	280.0	35.1	7	99	99	87												20.9

¹⁾ m Module

³⁾ n Number of holes

²⁾ z Number of teeth

⁴⁾ p_s End pitch ($p_s = m \cdot \pi / \cos \beta$)

$\beta = 19.5283^\circ (19^\circ 31' 42'')$

any other lengths on request

2.1 Technical principles

Module pitches helical toothed

Tooth rack: Pressure angle $\alpha = 20^\circ$
ground, soft or hardened

Outer surfaces: ground on all sides

Quality: 5 in accordance with DIN 3962, 3963, 3967
 f_p (mm) Single pitch deviation
Module ≤ 3 : 0,004
Module > 3 : 0,005

F_p (mm) Total pitch deviation
 $F_p/1000$ (mm) 0.024 for a 1000 mm length
 $F_p/2000$ (mm) 0.032 for a 2000 mm length

Fig. 1

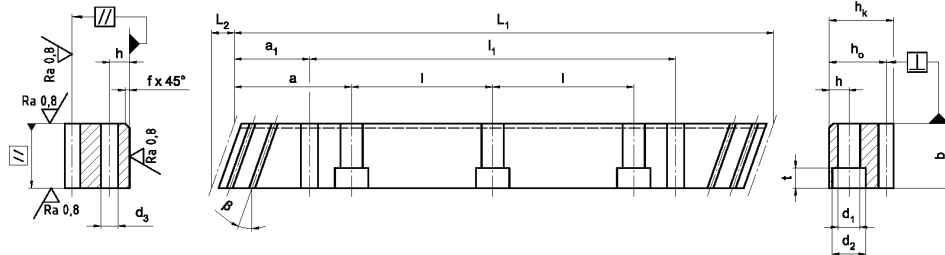


Fig. 2

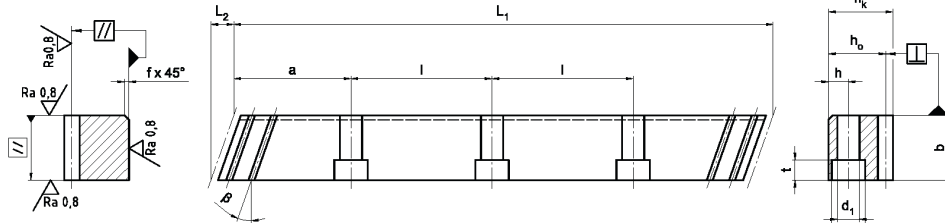
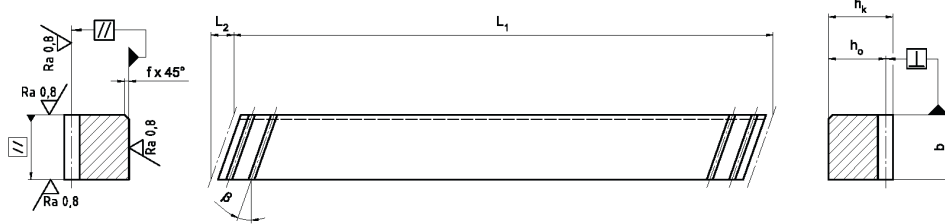


Fig. 3



Standard lengths	m ¹⁾	p _s ⁴⁾	L ₁	L ₂	z ²⁾	b	h _k	h ₀	f	a	l	n ³⁾	h	d ₁	d ₂	t	a ₁	l ₁	d ₃	Dimensions
	-	mm	mm	mm	-	mm	mm	mm	mm	mm	mm	-	mm	mm	mm	mm	mm	mm	mm	kg
ZST M2 - 24 x 24 x 1000 - S	2	6.67	1000.0	8.5	150	24	24	22	2	62.5	125.00	8	8	7	11	7	31.7	936.6	5.7	4.1
ZST M2 - 24 x 24 x 2000 - S	2	6.67	2000.0	8.5	300	24	24	22	2	62.5	125.00	16	8	7	11	7	31.7	1936.6	5.7	8.2
MST M2 - 24 x 24 x 200 - SL	2	6.67	200.0	8.5	30	24	24	22												0.8
ZST M3 - 29 x 29 x 1000 - S	3	10.00	1000.0	10.3	100	29	29	26	2	62.5	125.00	8	9	10	15	9	35.0	930.0	7.7	5.9
ZST M3 - 29 x 29 x 2000 - S	3	10.00	2000.0	10.3	200	29	29	26	2	62.5	125.00	16	9	10	15	9	35.0	1930.0	7.7	11.8
MST M3 - 29 x 29 x 200 - SL	3	10.00	200.0	10.3	20	29	29	26												1.2
ZST M4 - 39 x 39 x 1000 - S	4	13.33	1000.0	13.8	75	39	39	35	3	62.5	125.00	8	12	10	15	9	33.3	933.4	7.7	10.7
ZST M4 - 39 x 39 x 2000 - S	4	13.33	2000.0	13.8	150	39	39	35	3	62.5	125.00	16	12	10	15	9	33.3	1933.4	7.7	21.4
MST M4 - 39 x 39 x 200 - SL	4	13.33	200.0	13.8	15	39	39	35												2.2
ZST M5 - 49 x 39 x 1000 - S	5	16.67	1000.0	17.4	60	49	39	34	3	62.5	125.00	8	12	14	20	13	37.5	925.0	11.7	13.0
ZST M5 - 49 x 39 x 2000 - S	5	16.67	2000.0	17.4	120	49	39	34	3	62.5	125.00	16	12	14	20	13	37.5	1925.0	11.7	26.0
MST M5 - 49 x 39 x 200 - SL	5	16.67	200.0	17.4	12	49	39	34												2.7
ZST M6 - 59 x 49 x 1000 - S	6	20.00	1000.0	20.9	50	59	49	43	3	62.5	125.00	8	16	18	26	17	37.5	925.0	15.7	18.1
ZST M6 - 59 x 49 x 2000 - S	6	20.00	2000.0	20.9	100	59	49	43	3	62.5	125.00	16	16	18	26	17	37.5	1925.0	15.7	36.2
MST M6 - 59 x 49 x 200 - SL	6	20.00	200.0	20.9	10	59	49	43												3.8
ZST M8 - 79 x 79 x 960 - S	8	26.67	960.0	28.0	36	79	79	71	3	60.0	120.00	8	25	22	33	21	120.0	720.0	19.7	42.5
ZST M8 - 79 x 79 x 1920 - S	8	26.67	1920.0	28.0	72	79	79	71	3	60.0	120.00	16	25	22	33	21	120.0	1680.0	19.7	85.0
MST M8 - 79 x 79 x 213 - SL	8	26.67	213.3	28.0	8	79	79	71												8.9
ZST M10 - 99 x 99 x 1000 - S	10	33.33	1000.0	35.1	30	99	99	89	3	62.5	125.00	8	32	33	48	32	125.0	750.0	19.7	68.7
MST M10 - 79 x 79 x 233 - SL	10	33.33	233.3	28.0	7	79	79	69												10.2
ZST M12 - 120 x 120 x 1000 - S	12	40.00	1000.0	42.6	25	120	120	108	3	40.0	125.00	8	40	39	58	38	125.0	750.0	19.7	111.0
MST M12 - 99 x 99 x 280 - SL	12	40.00	280.0	35.1	7	99	99	87												20.9

¹⁾ m Module

³⁾ n Number of holes

²⁾ z Number of teeth

⁴⁾ p_s End pitch (p_s = m * π / cos β)

β = 19.5283° (19°31'42")

any other lengths on request

2.1 Technical principles

Module pitches helical toothed

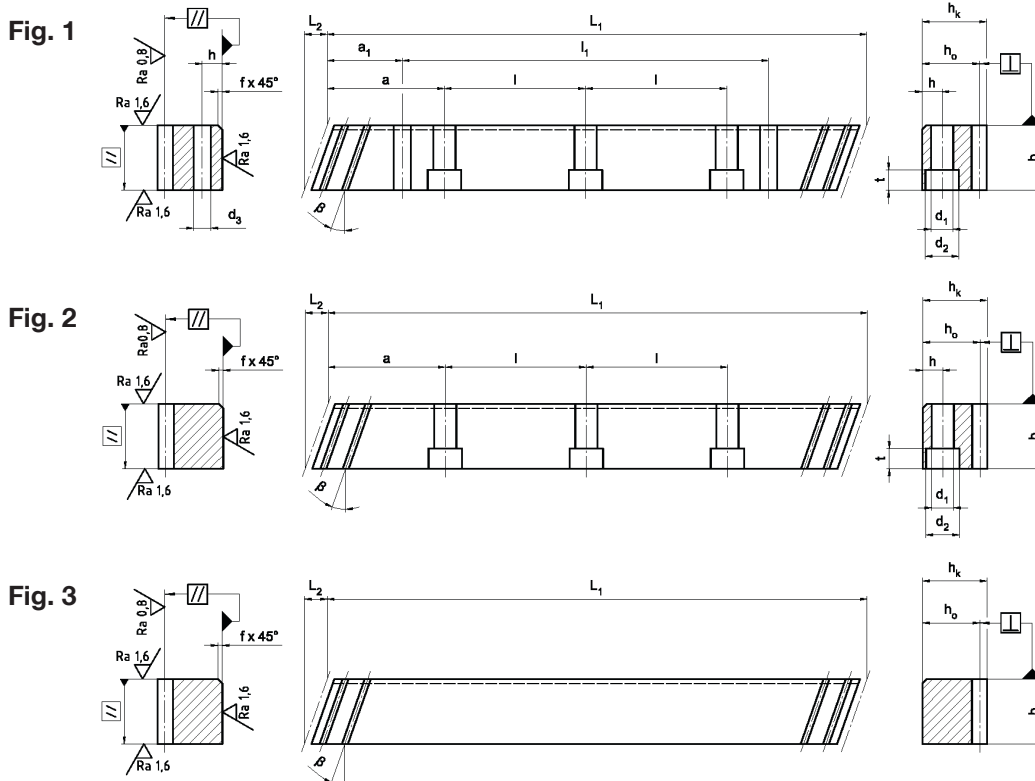
Tooth rack: Pressure angle $\alpha = 20^\circ$
ground, soft or hardened

Outer surfaces: ground on all sides

Quality: 6 in accordance with DIN 3962, 3963, 3967

f_p (mm) Single pitch deviation
Module ≤ 3 : 0.006
Module > 3 : 0.008

F_p (mm) Total pitch deviation
 $F_p/1000$ (mm) 0,035 for a 1000 mm Length
 $F_p/2000$ (mm) 0,045 for a 2000 mm Length



Standard lengths	m ¹⁾	p_s ⁴⁾	L_1	L_2	z ²⁾	b	h_k	h_o	f	a	l	n ³⁾	h	d_1	d_2	t	a_1	l_1	d_3	Dimensions
	-	mm	mm	mm	-	mm	mm	mm	mm	mm	mm	-	mm	mm	mm	mm	mm	mm	mm	kg
ZST M2 - 24 x 24 x 1000 - S	2	6.67	1000.0	8.5	150	24	24	22	2	62.5	125.00	8	8	7	11	7	31.7	936.6	5.7	4.1
ZST M2 - 24 x 24 x 2000 - S	2	6.67	2000.0	8.5	300	24	24	22	2	62.5	125.00	16	8	7	11	7	31.7	1936.6	5.7	8.2
MST M2 - 24 x 24 x 200 - SL	2	6.67	200.0	8.5	30	24	24	22												0.8
ZST M3 - 29 x 29 x 1000 - S	3	10.00	1000.0	10.3	100	29	29	26	2	62.5	125.00	8	9	10	15	9	35.0	930.0	7.7	5.9
ZST M3 - 29 x 29 x 2000 - S	3	10.00	2000.0	10.3	200	29	29	26	2	62.5	125.00	16	9	10	15	9	35.0	1930.0	7.7	11.8
MST M3 - 29 x 29 x 200 - SL	3	10.00	200.0	10.3	20	29	29	26												1.2
ZST M4 - 39 x 39 x 1000 - S	4	13.33	1000.0	13.8	75	39	39	35	3	62.5	125.00	8	12	10	15	9	33.3	933.4	7.7	10.7
ZST M4 - 39 x 39 x 2000 - S	4	13.33	2000.0	13.8	150	39	39	35	3	62.5	125.00	16	12	10	15	9	33.3	1933.4	7.7	21.4
MST M4 - 39 x 39 x 200 - SL	4	13.33	200.0	13.8	15	39	39	35												2.2
ZST M5 - 49 x 39 x 1000 - S	5	16.67	1000.0	17.4	60	49	39	34	3	62.5	125.00	8	12	14	20	13	37.5	925.0	11.7	13.0
ZST M5 - 49 x 39 x 2000 - S	5	16.67	2000.0	17.4	120	49	39	34	3	62.5	125.00	16	12	14	20	13	37.5	1925.0	11.7	26.0
MST M5 - 49 x 39 x 200 - SL	5	16.67	200.0	17.4	12	49	39	34												2.7
ZST M6 - 59 x 49 x 1000 - S	6	20.00	1000.0	20.9	50	59	49	43	3	62.5	125.00	8	16	18	26	17	37.5	925.0	15.7	18.1
ZST M6 - 59 x 49 x 2000 - S	6	20.00	2000.0	20.9	100	59	49	43	3	62.5	125.00	16	16	18	26	17	37.5	1925.0	15.7	36.2
MST M6 - 59 x 49 x 200 - SL	6	20.00	200.0	20.9	10	59	49	43												3.8
ZST M8 - 79 x 79 x 960 - S	8	26.67	960.0	28.0	36	79	79	71	3	60.0	120.00	8	25	22	33	21	120.0	720.0	19.7	42.5
ZST M8 - 79 x 79 x 1920 - S	8	26.67	1920.0	28.0	72	79	79	71	3	60.0	120.00	16	25	22	33	21	120.0	1680.0	19.7	85.0
MST M8 - 79 x 79 x 213 - SL	8	26.67	213.3	28.0	8	79	79	71												8.9
ZST M10 - 99 x 99 x 1000 - S	10	33.33	1000.0	35.1	30	99	99	89	3	62.5	125.00	8	32	33	48	32	125.0	750.0	19.7	68.7
MST M10 - 99 x 99 x 233 - SL	10	33.33	233.3	28.0	7	99	99	69												10.2
ZST M12 - 120 x 120 x 1000 - S	12	40.00	1000.0	42.6	25	120	120	108	3	40.0	125.00	8	40	39	58	38	125.0	750.0	19.7	111.0
MST M12 - 99 x 99 x 280 - SL	12	40.00	280.0	35.1	7	99	99	87												20.9

¹⁾ m Module

³⁾ n Number of holes

²⁾ z Number of teeth

⁴⁾ p_s End pitch ($p_s = m \cdot \pi / \cos \beta$)

$\beta = 19.5283^\circ (19^\circ 31' 42'')$

any other lengths on request

2.1 Technical principles

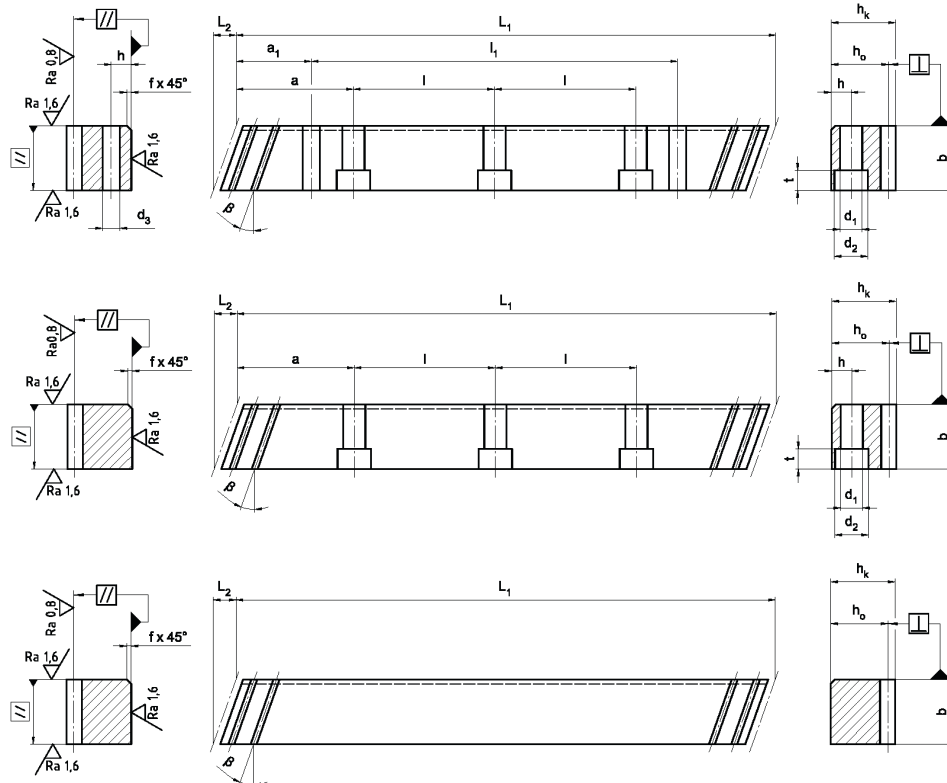
Module pitches helical toothed

Tooth rack: Pressure angle $\alpha = 20^\circ$
ground, soft or hardened

Outer surfaces: ground on all sides

Quality: 5 in accordance with DIN 3962, 3963, 3967
 f_p (mm) Single pitch deviation
Module ≤ 3 : 0,007
Module > 3 : 0,009

F_p (mm) Total pitch deviation
 $F_p/1000$ (mm) 0.060 for a 1000 mm length
 $F_p/2000$ (mm) 0.075 for a 2000 mm length



Standard lengths	m ¹⁾	p_s ⁴⁾	L_1	L_2	z ²⁾	b	h_k	h_0	f	a	l	n ³⁾	h	d_1	d_2	t	a_1	l_1	d_3	Dimensions
	-	mm	mm	mm	-	mm	mm	mm	mm	mm	mm	-	mm	mm	mm	mm	mm	mm	mm	kg
ZST M2 - 24 x 24 x 1000 - S	2	6.67	1000.0	8.5	150	24	24	22	2	62.5	125.00	8	8	7	11	7	31.7	936.6	5.7	4.1
ZST M2 - 24 x 24 x 2000 - S	2	6.67	2000.0	8.5	300	24	24	22	2	62.5	125.00	16	8	7	11	7	31.7	1936.6	5.7	8.2
MST M2 - 24 x 24 x 200 - SL	2	6.67	200.0	8.5	30	24	24	22												0.8
ZST M3 - 29 x 29 x 1000 - S	3	10.00	1000.0	10.3	100	29	29	26	2	62.5	125.00	8	9	10	15	9	35.0	930.0	7.7	5.9
ZST M3 - 29 x 29 x 2000 - S	3	10.00	2000.0	10.3	200	29	29	26	2	62.5	125.00	16	9	10	15	9	35.0	1930.0	7.7	11.8
MST M3 - 29 x 29 x 200 - SL	3	10.00	200.0	10.3	20	29	29	26												1.2
ZST M4 - 39 x 39 x 1000 - S	4	13.33	1000.0	13.8	75	39	39	35	3	62.5	125.00	8	12	10	15	9	33.3	933.4	7.7	10.7
ZST M4 - 39 x 39 x 2000 - S	4	13.33	2000.0	13.8	150	39	39	35	3	62.5	125.00	16	12	10	15	9	33.3	1933.4	7.7	21.4
MST M4 - 39 x 39 x 200 - SL	4	13.33	200.0	13.8	15	39	39	35												2.2
ZST M5 - 49 x 39 x 1000 - S	5	16.67	1000.0	17.4	60	49	39	34	3	62.5	125.00	8	12	14	20	13	37.5	925.0	11.7	13.0
ZST M5 - 49 x 39 x 2000 - S	5	16.67	2000.0	17.4	120	49	39	34	3	62.5	125.00	16	12	14	20	13	37.5	1925.0	11.7	26.0
MST M5 - 49 x 39 x 200 - SL	5	16.67	200.0	17.4	12	49	39	34												2.7
ZST M6 - 59 x 49 x 1000 - S	6	20.00	1000.0	20.9	50	59	49	43	3	62.5	125.00	8	16	18	26	17	37.5	925.0	15.7	18.1
ZST M6 - 59 x 49 x 2000 - S	6	20.00	2000.0	20.9	100	59	49	43	3	62.5	125.00	16	16	18	26	17	37.5	1925.0	15.7	36.2
MST M6 - 59 x 49 x 200 - SL	6	20.00	200.0	20.9	10	59	49	43												3.8
ZST M8 - 79 x 79 x 960 - S	8	26.67	960.0	28.0	36	79	79	71	3	60.0	120.00	8	25	22	33	21	120.0	720.0	19.7	42.5
ZST M8 - 79 x 79 x 1920 - S	8	26.67	1920.0	28.0	72	79	79	71	3	60.0	120.00	16	25	22	33	21	120.0	1680.0	19.7	85.0
MST M8 - 79 x 79 x 213 - SL	8	26.67	213.3	28.0	8	79	79	71												8.9
ZST M10 - 99 x 99 x 1000 - S	10	33.33	1000.0	35.1	30	99	99	89	3	62.5	125.00	8	32	33	48	32	125.0	750.0	19.7	68.7
MST M10 - 79 x 79 x 233 - SL	10	33.33	233.3	28.0	7	79	79	69												10.2
ZST M12 - 120 x 120 x 1000 - S	12	40.00	1000.0	42.6	25	120	120	108	3	40.0	125.00	8	40	39	58	38	125.0	750.0	19.7	111.0
MST M12 - 99 x 99 x 280 - SL	12	40.00	280.0	35.1	7	99	99	87												20.9

¹⁾ m Module

³⁾ n Number of holes

²⁾ z Number of teeth

⁴⁾ p_s End pitch ($p_s = m \cdot \tau / \cos \beta$)

$\beta = 19.5283^\circ (19^\circ 31' 42'')$

any other lengths on request

2.1 Technical principles

Module pitches helical toothed

Tooth rack: Pressure angle $\alpha = 20^\circ$
milled, soft

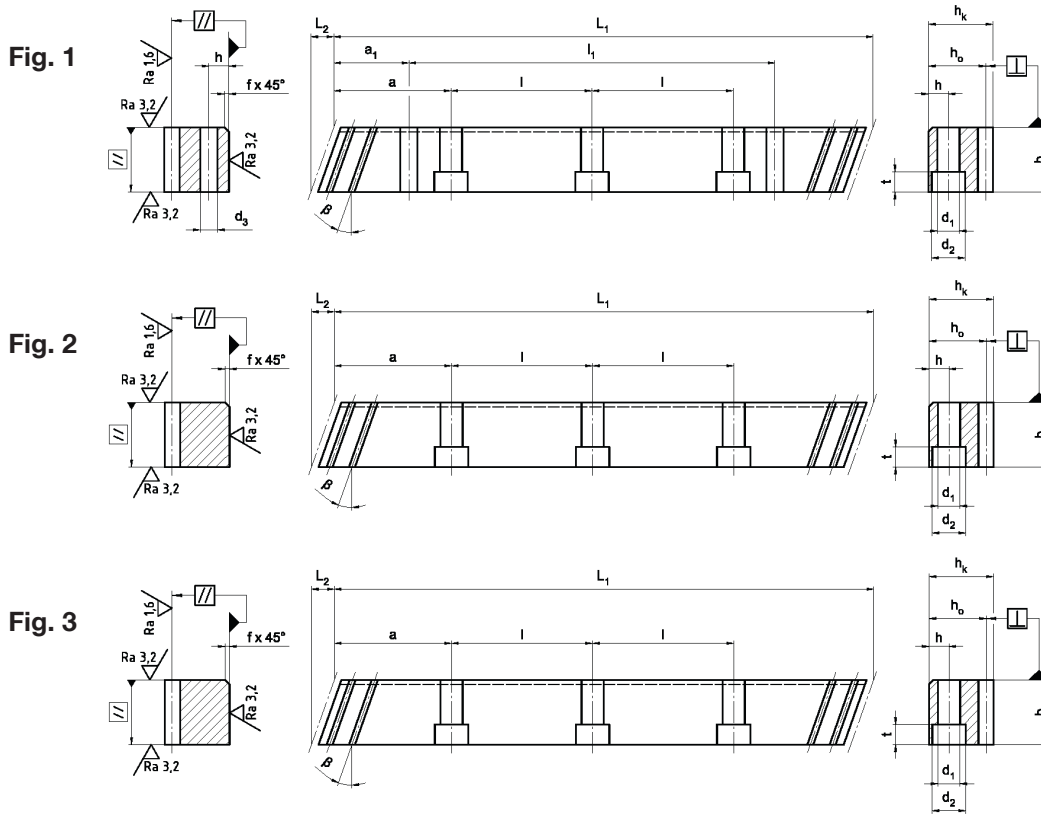
Outer surfaces: ground on all sides

Quality: 8 in accordance with DIN 3962, 3963, 3967

F_p (mm) Total pitch deviation

F_p/1000 (mm) 0,150 for a 1000 mm Length

F_p/2000 (mm) 0,225 for a 2000 mm Length



Standard lengths	m ¹⁾	p _s ⁴⁾	L ₁	L ₂	z ²⁾	b	h _k	h _b	f	a	l	n ³⁾	h	d ₁	d ₂	t	a ₁	l ₁	d ₃	Dimensions
	-	mm	mm	mm	-	mm	mm	mm	mm	mm	mm	-	mm	mm	mm	mm	mm	mm	mm	kg
ZST M2 - 24 x 24 x 1000 - S	2	6.67	1000.0	8.5	150	24	24	22	2	62.5	125.00	8	8	7	11	7	31.7	936.6	5.7	4.1
ZST M2 - 24 x 24 x 2000 - S	2	6.67	2000.0	8.5	300	24	24	22	2	62.5	125.00	16	8	7	11	7	31.7	1936.6	5.7	8.2
MST M2 - 24 x 24 x 200 - SL	2	6.67	200.0	8.5	30	24	24	22												0.8
ZST M3 - 29 x 29 x 1000 - S	3	10.00	1000.0	10.3	100	29	29	26	2	62.5	125.00	8	9	10	15	9	35.0	930.0	7.7	5.9
ZST M3 - 29 x 29 x 2000 - S	3	10.00	2000.0	10.3	200	29	29	26	2	62.5	125.00	16	9	10	15	9	35.0	1930.0	7.7	11.8
MST M3 - 29 x 29 x 200 - SL	3	10.00	200.0	10.3	20	29	29	26												1.2
ZST M4 - 39 x 39 x 1000 - S	4	13.33	1000.0	13.8	75	39	39	35	3	62.5	125.00	8	12	10	15	9	33.3	933.4	7.7	10.7
ZST M4 - 39 x 39 x 2000 - S	4	13.33	2000.0	13.8	150	39	39	35	3	62.5	125.00	16	12	10	15	9	33.3	1933.4	7.7	21.4
MST M4 - 39 x 39 x 200 - SL	4	13.33	200.0	13.8	15	39	39	35												2.2
ZST M5 - 49 x 39 x 1000 - S	5	16.67	1000.0	17.4	60	49	39	34	3	62.5	125.00	8	12	14	20	13	37.5	925.0	11.7	13.0
ZST M5 - 49 x 39 x 2000 - S	5	16.67	2000.0	17.4	120	49	39	34	3	62.5	125.00	16	12	14	20	13	37.5	1925.0	11.7	26.0
MST M5 - 49 x 39 x 200 - SL	5	16.67	200.0	17.4	12	49	39	34												2.7
ZST M6 - 59 x 49 x 1000 - S	6	20.00	1000.0	20.9	50	59	49	43	3	62.5	125.00	8	16	18	26	17	37.5	925.0	15.7	18.1
ZST M6 - 59 x 49 x 2000 - S	6	20.00	2000.0	20.9	100	59	49	43	3	62.5	125.00	16	16	18	26	17	37.5	1925.0	15.7	36.2
MST M6 - 59 x 49 x 200 - SL	6	20.00	200.0	20.9	10	59	49	43												3.8
ZST M8 - 79 x 79 x 960 - S	8	26.67	960.0	28.0	36	79	79	71	3	60.0	120.00	8	25	22	33	21	120.0	720.0	19.7	42.5
ZST M8 - 79 x 79 x 1920 - S	8	26.67	1920.0	28.0	72	79	79	71	3	60.0	120.00	16	25	22	33	21	120.0	1680.0	19.7	85.0
MST M8 - 79 x 79 x 213 - SL	8	26.67	213.3	28.0	8	79	79	71												8.9
ZST M10 - 99 x 99 x 1000 - S	10	33.33	1000.0	35.1	30	99	99	89	3	62.5	125.00	8	32	33	48	32	125.0	750.0	19.7	68.7
MST M10 - 79 x 79 x 233 - SL	10	33.33	233.3	28.0	7	79	79	69												10.2
ZST M12 - 120 x 120 x 1000 - S	12	40.00	1000.0	42.6	25	120	120	108	3	40.0	125.00	8	40	39	58	38	125.0	750.0	19.7	111.0
MST M12 - 99 x 99 x 280 - SL	12	40.00	280.0	35.1	7	99	99	87												20.9

¹⁾ m Module

³⁾ n Number of holes

²⁾ z Number of teeth

⁴⁾ p_s End pitch (p_s=m*π/cos β)

β = 19.5283° (19°31'42")

any other lengths on request

2.1 Technical principles

Module pitches helical toothed

Tooth rack: Pressure angle $\alpha = 20^\circ$
ground, nitrided

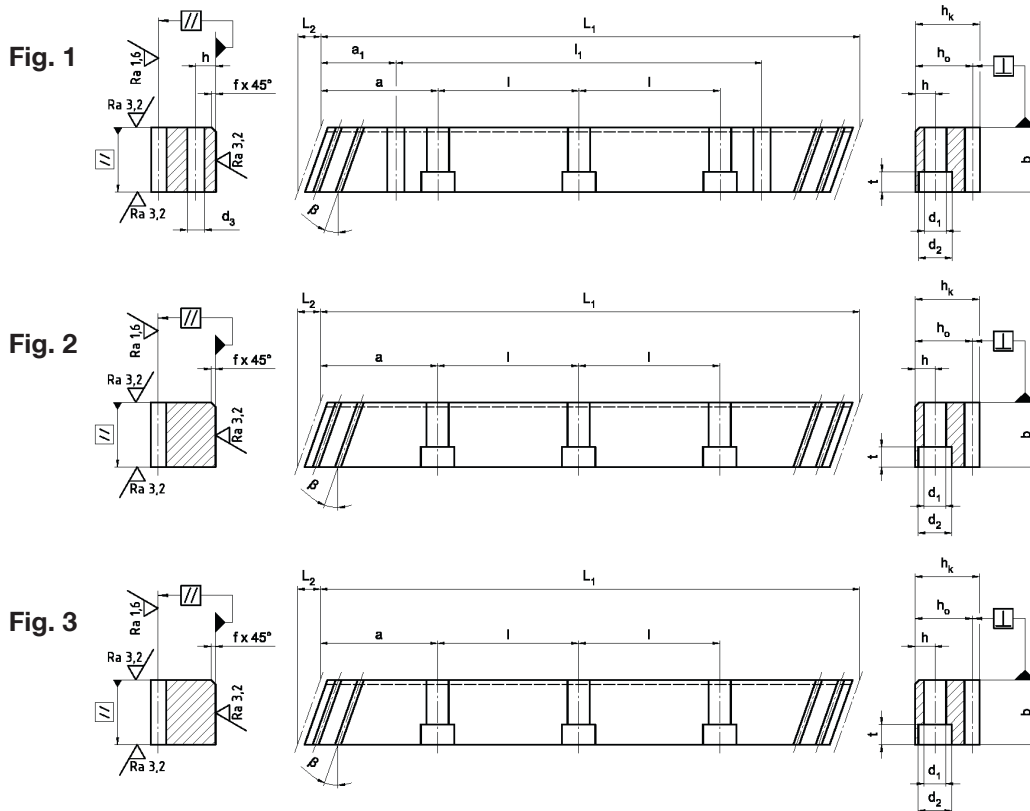
Outer surfaces: ground on all sides

Quality: 9 in accordance with DIN 3962, 3963, 3967

F_p (mm) Total pitch deviation

F_p/1000 (mm) 0,180 for a 1000 mm Length

F_p/2000 (mm) 0,270 for a 2000 mm Length



Standard lengths	m ¹⁾	p _s ⁴⁾	L ₁	L ₂	z ²⁾	b	h _k	h ₀	f	a	l	n ³⁾	h	d ₁	d ₂	t	a ₁	l ₁	d ₃	Dimensions
	-	mm	mm	mm	-	mm	mm	mm	mm	mm	mm	-	mm	mm	mm	mm	mm	mm	mm	kg
ZST M2 - 24 x 24 x 1000 - S	2	6.67	1000.0	8.5	150	24	24	22	2	62.5	125.00	8	8	7	11	7	31.7	936.6	5.7	4.1
ZST M2 - 24 x 24 x 2000 - S	2	6.67	2000.0	8.5	300	24	24	22	2	62.5	125.00	16	8	7	11	7	31.7	1936.6	5.7	8.2
MST M2 - 24 x 24 x 200 - SL	2	6.67	200.0	8.5	30	24	24	22												0.8
ZST M3 - 29 x 29 x 1000 - S	3	10.00	1000.0	10.3	100	29	29	26	2	62.5	125.00	8	9	10	15	9	35.0	930.0	7.7	5.9
ZST M3 - 29 x 29 x 2000 - S	3	10.00	2000.0	10.3	200	29	29	26	2	62.5	125.00	16	9	10	15	9	35.0	1930.0	7.7	11.8
MST M3 - 29 x 29 x 200 - SL	3	10.00	200.0	10.3	20	29	29	26												1.2
ZST M4 - 39 x 39 x 1000 - S	4	13.33	1000.0	13.8	75	39	39	35	3	62.5	125.00	8	12	10	15	9	33.3	933.4	7.7	10.7
ZST M4 - 39 x 39 x 2000 - S	4	13.33	2000.0	13.8	150	39	39	35	3	62.5	125.00	16	12	10	15	9	33.3	1933.4	7.7	21.4
MST M4 - 39 x 39 x 200 - SL	4	13.33	200.0	13.8	15	39	39	35												2.2
ZST M5 - 49 x 39 x 1000 - S	5	16.67	1000.0	17.4	60	49	39	34	3	62.5	125.00	8	12	14	20	13	37.5	925.0	11.7	13.0
ZST M5 - 49 x 39 x 2000 - S	5	16.67	2000.0	17.4	120	49	39	34	3	62.5	125.00	16	12	14	20	13	37.5	1925.0	11.7	26.0
MST M5 - 49 x 39 x 200 - SL	5	16.67	200.0	17.4	12	49	39	34												2.7
ZST M6 - 59 x 49 x 1000 - S	6	20.00	1000.0	20.9	50	59	49	43	3	62.5	125.00	8	16	18	26	17	37.5	925.0	15.7	18.1
ZST M6 - 59 x 49 x 2000 - S	6	20.00	2000.0	20.9	100	59	49	43	3	62.5	125.00	16	16	18	26	17	37.5	1925.0	15.7	36.2
MST M6 - 59 x 49 x 200 - SL	6	20.00	200.0	20.9	10	59	49	43												3.8
ZST M8 - 79 x 79 x 960 - S	8	26.67	960.0	28.0	36	79	79	71	3	60.0	120.00	8	25	22	33	21	120.0	720.0	19.7	42.5
ZST M8 - 79 x 79 x 1920 - S	8	26.67	1920.0	28.0	72	79	79	71	3	60.0	120.00	16	25	22	33	21	120.0	1680.0	19.7	85.0
MST M8 - 79 x 79 x 213 - SL	8	26.67	213.3	28.0	8	79	79	71												8.9
ZST M10 - 99 x 99 x 1000 - S	10	33.33	1000.0	35.1	30	99	99	89	3	62.5	125.00	8	32	33	48	32	125.0	750.0	19.7	68.7
MST M10 - 79 x 79 x 233 - SL	10	33.33	233.3	28.0	7	79	79	69												10.2
ZST M12 - 120 x 120 x 1000 - S	12	40.00	1000.0	42.6	25	120	120	108	3	40.0	125.00	8	40	39	58	38	125.0	750.0	19.7	111.0
MST M12 - 99 x 99 x 280 - SL	12	40.00	280.0	35.1	7	99	99	87												20.9

¹⁾ m Module

³⁾ n Number of holes

²⁾ z Number of teeth

⁴⁾ p_s End pitch (p_s = m * π / cos β)

β = 19.5283° (19°31'42")

any other lengths on request

2.1 Technical principles

Module pitches helical toothed

Tooth rack: Pressure angle $\alpha = 20^\circ$
milled, induction hardened

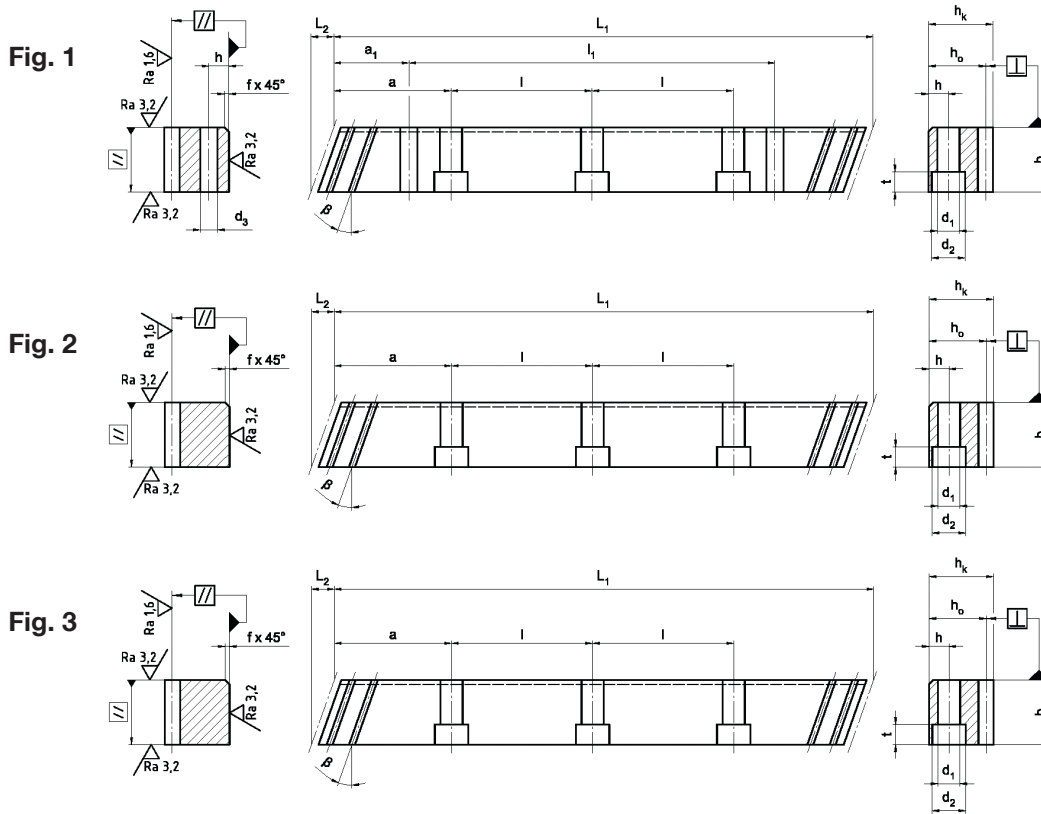
Outer surfaces: ground on all sides

Quality: 11 in accordance with DIN 3962, 3963, 3967

F_p (mm) Total pitch deviation

F_p/1000 (mm) 0,220 for a 1000 mm Length

F_p/2000 (mm) 0,330 for a 2000 mm Length



Standard lengths	m ¹⁾	p _s ⁴⁾	L ₁	L ₂	z ²⁾	b	h _k	h ₀	f	a	l	n ³⁾	h	d ₁	d ₂	t	a ₁	l ₁	d ₃	Dimensions
	-	mm	mm	mm	-	mm	mm	mm	mm	mm	mm	-	mm	mm	mm	mm	mm	mm	mm	kg
ZST M2 - 24 x 24 x 1000 - S	2	6.67	1000.0	8.5	150	24	24	22	2	62.5	125.00	8	8	7	11	7	31.7	936.6	5.7	4.1
ZST M2 - 24 x 24 x 2000 - S	2	6.67	2000.0	8.5	300	24	24	22	2	62.5	125.00	16	8	7	11	7	31.7	1936.6	5.7	8.2
MST M2 - 24 x 24 x 200 - SL	2	6.67	200.0	8.5	30	24	24	22												0.8
ZST M3 - 29 x 29 x 1000 - S	3	10.00	1000.0	10.3	100	29	29	26	2	62.5	125.00	8	9	10	15	9	35.0	930.0	7.7	5.9
ZST M3 - 29 x 29 x 2000 - S	3	10.00	2000.0	10.3	200	29	29	26	2	62.5	125.00	16	9	10	15	9	35.0	1930.0	7.7	11.8
MST M3 - 29 x 29 x 200 - SL	3	10.00	200.0	10.3	20	29	29	26												1.2
ZST M4 - 39 x 39 x 1000 - S	4	13.33	1000.0	13.8	75	39	39	35	3	62.5	125.00	8	12	10	15	9	33.3	933.4	7.7	10.7
ZST M4 - 39 x 39 x 2000 - S	4	13.33	2000.0	13.8	150	39	39	35	3	62.5	125.00	16	12	10	15	9	33.3	1933.4	7.7	21.4
MST M4 - 39 x 39 x 200 - SL	4	13.33	200.0	13.8	15	39	39	35												2.2
ZST M5 - 49 x 39 x 1000 - S	5	16.67	1000.0	17.4	60	49	39	34	3	62.5	125.00	8	12	14	20	13	37.5	925.0	11.7	13.0
ZST M5 - 49 x 39 x 2000 - S	5	16.67	2000.0	17.4	120	49	39	34	3	62.5	125.00	16	12	14	20	13	37.5	1925.0	11.7	26.0
MST M5 - 49 x 39 x 200 - SL	5	16.67	200.0	17.4	12	49	39	34												2.7
ZST M6 - 59 x 49 x 1000 - S	6	20.00	1000.0	20.9	50	59	49	43	3	62.5	125.00	8	16	18	26	17	37.5	925.0	15.7	18.1
ZST M6 - 59 x 49 x 2000 - S	6	20.00	2000.0	20.9	100	59	49	43	3	62.5	125.00	16	16	18	26	17	37.5	1925.0	15.7	36.2
MST M6 - 59 x 49 x 200 - SL	6	20.00	200.0	20.9	10	59	49	43												3.8
ZST M8 - 79 x 79 x 960 - S	8	26.67	960.0	28.0	36	79	79	71	3	60.0	120.00	8	25	22	33	21	120.0	720.0	19.7	42.5
ZST M8 - 79 x 79 x 1920 - S	8	26.67	1920.0	28.0	72	79	79	71	3	60.0	120.00	16	25	22	33	21	120.0	1680.0	19.7	85.0
MST M8 - 79 x 79 x 213 - SL	8	26.67	213.3	28.0	8	79	79	71												8.9
ZST M10 - 99 x 99 x 1000 - S	10	33.33	1000.0	35.1	30	99	99	89	3	62.5	125.00	8	32	33	48	32	125.0	750.0	19.7	68.7
MST M10 - 99 x 99 x 233 - SL	10	33.33	233.3	35.1	7	99	99	89												10.2
ZST M12 - 120 x 120 x 1000 - S	12	40.00	1000.0	42.6	25	120	120	108	3	40.0	125.00	8	40	39	58	38	125.0	750.0	19.7	111.0
MST M12 - 99 x 99 x 280 - SL	12	40.00	280.0	35.1	7	99	99	87												20.9

¹⁾ m Module

³⁾ n Number of holes

²⁾ z Number of teeth

⁴⁾ p_s End pitch (p_s = m * π / cos β)

β = 19.5283° (19°31'42")

any other lengths on request

2.2 Technical principles

Module pitches straight toothed

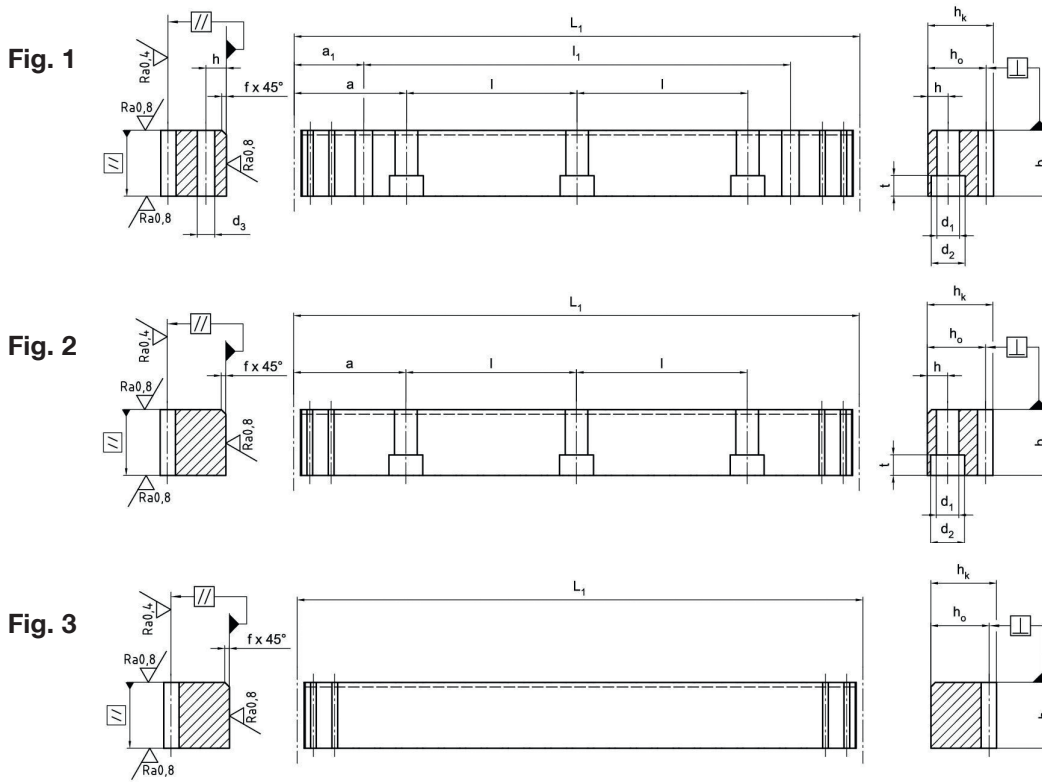
Tooth rack: Pressure angle $\alpha = 20^\circ$
ground, soft or hardened

Outer surfaces: ground on all sides

Quality: 4 in accordance with DIN 3962, 3963, 3967

f_p (mm) Single pitch deviation
Module ≤ 3 : 0.003
Module > 3 : 0.004

F_p (mm) Total pitch deviation
 $F_p/1000$ (mm) 0,015 for a 1000 mm Length



Standard lengths	m ¹⁾ mm	p ⁴⁾ mm	L ₁ mm	z ²⁾ -	b mm	h _k mm	h ₀ mm	f mm	a mm	l mm	n ³⁾ -	h mm	d ₁ mm	d ₂ mm	t mm	a ₁ mm	l ₁ mm	d ₃ mm	Dimensions kg
ZST M2 - 24 x 24 x 1005 - G	2	6.28	1005.3	160	24	24	22	2	62.8	125.66	8	8	7	11	7	31.3	942.7	5.7	4.2
ZST M2 - 24 x 24 x 2010 - G	2	6.28	2010.6	320	24	24	22	2	62.8	125.66	16	8	7	11	7	31.3	1948.0	5.7	8.4
MST M2 - 24 x 24 x 201 - G	2	6.28	201.0	32	24	24	22												0.8
ZST M3 - 29 x 29 x 1017 - G	3	9.42	1017.9	108	29	29	26	2	63.6	127.23	8	9	10	15	9	34.4	949.1	7.7	6.0
ZST M3 - 29 x 29 x 2035 - G	3	9.42	2035.8	216	29	29	26	2	63.6	127.23	16	9	10	15	9	34.4	1967.0	7.7	12.0
MST M3 - 29 x 29 x 198 - G	3	9.42	198.0	21	29	29	26												1.2
ZST M4 - 39 x 39 x 1005 - G	4	12.57	1005.3	80	39	39	35	3	62.8	125.66	8	12	10	15	9	37.5	930.3	7.7	10.7
ZST M4 - 39 x 39 x 2010 - G	4	12.57	2010.6	160	39	39	35	3	62.8	125.66	16	12	10	15	9	37.5	1935.6	7.7	21.4
MST M4 - 39 x 39 x 201 - G	4	12.57	201.0	16	39	39	35												2.2
ZST M5 - 49 x 39 x 1005 - G	5	15.71	1005.3	64	49	39	34	3	62.8	125.66	8	12	14	20	13	30.1	945.0	11.7	13.1
ZST M5 - 49 x 39 x 2010 - G	5	15.71	2010.6	128	49	39	34	3	62.8	125.66	16	12	14	20	13	30.1	1950.4	11.7	26.2
MST M5 - 49 x 39 x 204 - G	5	15.71	204.0	13	49	39	34												2.7
ZST M6 - 59 x 49 x 1017 - G	6	18.85	1017.9	54	59	49	43	3	63.6	127.23	8	16	18	26	17	31.4	955.0	15.7	20.2
ZST M6 - 59 x 49 x 2035 - G	6	18.85	2035.8	108	59	49	43	3	63.6	127.23	16	16	18	26	17	31.4	1973.0	15.7	40.4
MST M6 - 59 x 49 x 207 - G	6	18.85	207.0	11	59	49	43												4.1
ZST M8 - 79 x 79 x 1005 - G	8	25.13	1005.3	40	79	79	71	3	62.8	125.66	8	25	22	33	21	26.6	952.0	19.7	44.3
ZST M8 - 79 x 79 x 2010 - G	8	25.13	2010.6	80	79	79	71	3	62.8	125.66	16	25	22	33	21	26.6	1957.3	19.7	88.6
MST M8 - 79 x 79 x 201 - G	8	25.13	201.0	8	79	79	71												8.9
ZST M10 - 99 x 99 x 1005 - G	10	31.42	1005.3	32	99	99	89	3	62.8	125.66	8	32	33	48	32	125.7	754.0	19.7	68.7
MST M10 - 79 x 79 x 219 - G	10	31.42	219.0	7	79	79	69												10.2
ZST M12 - 120 x 120 x 1017 - G	12	37.70	1017.9	27	120	120	108	3	63.6	127.23	8	40	39	58	38	127.2	763.4	19.7	109.0
MST M12 - 99 x 99 x 263 - G	12	37.70	263.0	7	99	99	87												19.0

¹⁾ m Module ³⁾ n Number of holes
²⁾ z Number of teeth ⁴⁾ p Pitch (p=m*π)

any other lengths on request

2.2 Technical principles

Module pitches straight toothed

Tooth rack: Pressure angle $\alpha = 20^\circ$
ground, soft or hardened

Outer surfaces: ground on all sides

Quality: 5 in accordance with DIN 3962, 3963, 3967

f_p (mm) Single pitch deviation
Module ≤ 3 : 0,004
Module > 3 : 0,005

F_p (mm) Total pitch deviation
 $F_p/1000$ (mm) 0.024 for a 1000 mm length
 $F_p/2000$ (mm) 0.032 for a 2000 mm length

Fig. 1

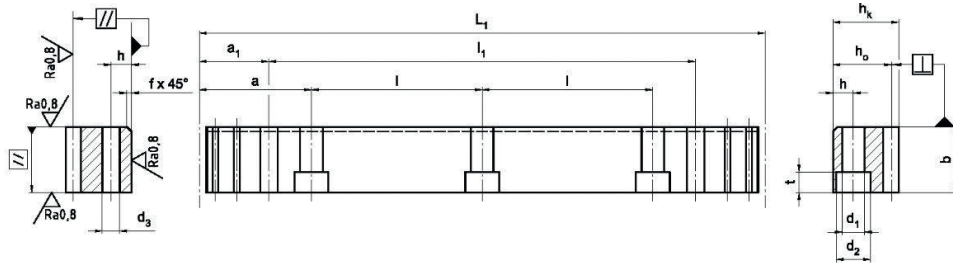


Fig. 2

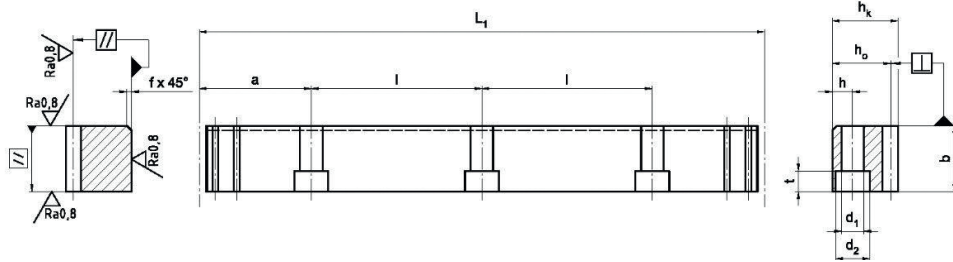
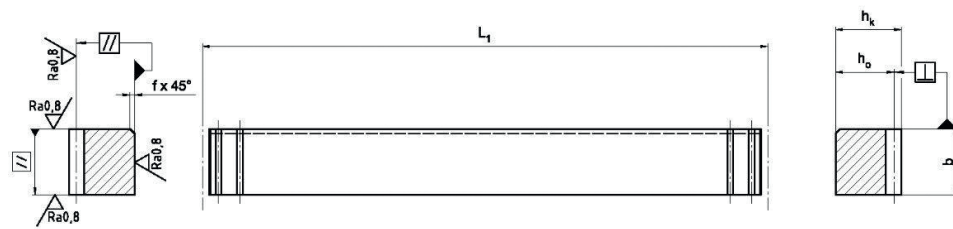


Fig. 3



Standard lengths	m ¹⁾	p ⁴⁾	L ₁	z ²⁾	b	h _k	h _o	f	a	l	n ³⁾	h	d ₁	d ₂	t	a ₁	l ₁	d ₃	Dimensions
	-	mm	mm	-	mm	mm	mm	mm	mm	mm	-	mm	mm	mm	mm	mm	mm	mm	kg
ZST M2 - 24 x 24 x 1005 - G	2	6.28	1005.3	160	24	24	22	2	62.8	125.66	8	8	7	11	7	31.3	942.7	5.7	4.2
ZST M2 - 24 x 24 x 2010 - G	2	6.28	2010.6	320	24	24	22	2	62.8	125.66	16	8	7	11	7	31.3	1948.0	5.7	8.4
MST M2 - 24 x 24 x 201 - G	2	6.28	201.0	32	24	24	22												0.8
ZST M3 - 29 x 29 x 1017 - G	3	9.42	1017.9	108	29	29	26	2	63.6	127.23	8	9	10	15	9	34.4	949.1	7.7	6.0
ZST M3 - 29 x 29 x 2035 - G	3	9.42	2035.8	216	29	29	26	2	63.6	127.23	16	9	10	15	9	34.4	1967.0	7.7	12.0
MST M3 - 29 x 29 x 198 - G	3	9.42	198.0	21	29	29	26												1.2
ZST M4 - 39 x 39 x 1005 - G	4	12.57	1005.3	80	39	39	35	3	62.8	125.66	8	12	10	15	9	37.5	930.3	7.7	10.7
ZST M4 - 39 x 39 x 2010 - G	4	12.57	2010.6	160	39	39	35	3	62.8	125.66	16	12	10	15	9	37.5	1935.6	7.7	21.4
MST M4 - 39 x 39 x 201 - G	4	12.57	201.0	16	39	39	35												2.2
ZST M5 - 49 x 39 x 1005 - G	5	15.71	1005.3	64	49	39	34	3	62.8	125.66	8	12	14	20	13	30.1	945.0	11.7	13.1
ZST M5 - 49 x 39 x 2010 - G	5	15.71	2010.6	128	49	39	34	3	62.8	125.66	16	12	14	20	13	30.1	1950.4	11.7	26.2
MST M5 - 49 x 39 x 204 - G	5	15.71	204.0	13	49	39	34												2.7
ZST M6 - 59 x 49 x 1017 - G	6	18.85	1017.9	54	59	49	43	3	63.6	127.23	8	16	18	26	17	31.4	955.0	15.7	20.2
ZST M6 - 59 x 49 x 2035 - G	6	18.85	2035.8	108	59	49	43	3	63.6	127.23	16	16	18	26	17	31.4	1973.0	15.7	40.4
MST M6 - 59 x 49 x 207 - G	6	18.85	207.0	11	59	49	43												4.1
ZST M8 - 79 x 79 x 1005 - G	8	25.13	1005.3	40	79	79	71	3	62.8	125.66	8	25	22	33	21	26.6	952.0	19.7	44.3
ZST M8 - 79 x 79 x 2010 - G	8	25.13	2010.6	80	79	79	71	3	62.8	125.66	16	25	22	33	21	26.6	1957.3	19.7	88.6
MST M8 - 79 x 79 x 201 - G	8	25.13	201.0	8	79	79	71												8.9
ZST M10 - 99 x 99 x 1005 - G	10	31.42	1005.3	32	99	99	89	3	62.8	125.66	8	32	33	48	32	125.7	754.0	19.7	68.7
MST M10 - 79 x 79 x 219 - G	10	31.42	219.0	7	79	79	69												10.2
ZST M12 - 120 x 120 x 1017 - G	12	37.70	1017.9	27	120	120	108	3	63.6	127.23	8	40	39	58	38	127.2	763.4	19.7	109.0
MST M12 - 99 x 99 x 263 - G	12	37.70	263.0	7	99	99	87												19.0

¹⁾ m Module

³⁾ n Number of holes

²⁾ z Number of teeth

⁴⁾ p Pitch ($p=m \cdot \pi$)

any other lengths on request

2.2 Technical principles

Module pitches straight toothed

Tooth rack: Pressure angle $\alpha = 20^\circ$
ground, soft or hardened

Outer surfaces: ground on all sides

Quality: 6 in accordance with DIN 3962, 3963, 3967

f_p (mm) Single pitch deviation
Module ≤ 3 : 0.006
Module > 3 : 0.008

F_p (mm) Total pitch deviation
 $F_p/1000$ (mm) 0,035 for a 1000 mm Length
 $F_p/2000$ (mm) 0,045 for a 2000 mm Length

Fig. 1

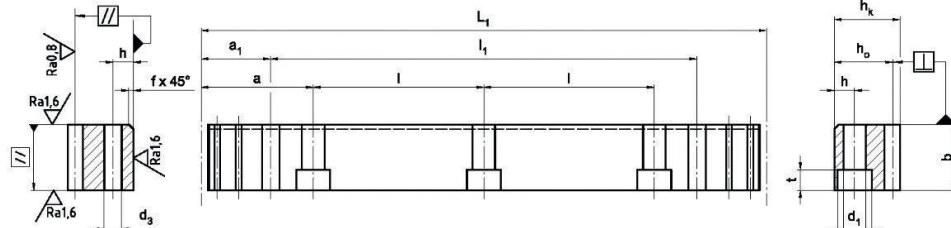


Fig. 2

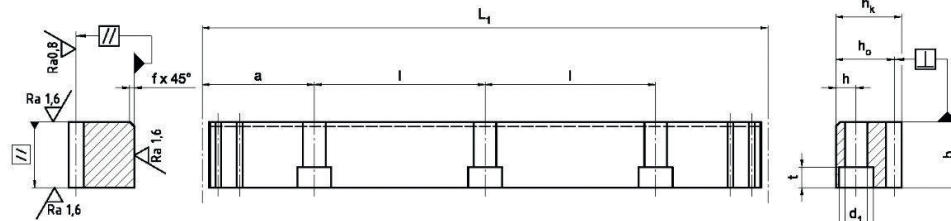
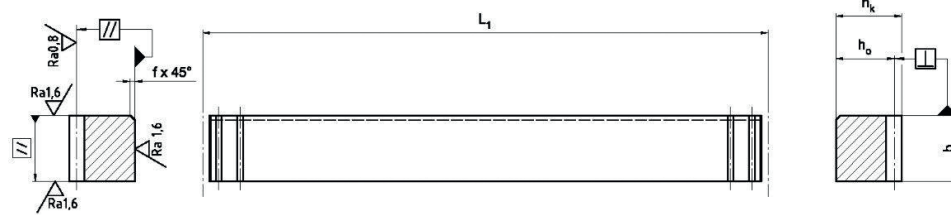


Fig. 3



Standard lengths	m ¹⁾	p ⁴⁾	L ₁	z ²⁾	b	h _k	h _o	f	a	l	n ³⁾	h	d ₁	d ₂	t	a ₁	l ₁	d ₃	Dimensions
	-	mm	mm	-	mm	mm	mm	mm	mm	mm	-	mm	mm	mm	mm	mm	mm	mm	kg
ZST M2 - 24 x 24 x 1005 - G	2	6.28	1005.3	160	24	24	22	2	62.8	125.66	8	8	7	11	7	31.3	942.7	5.7	4.2
ZST M2 - 24 x 24 x 2010 - G	2	6.28	2010.6	320	24	24	22	2	62.8	125.66	16	8	7	11	7	31.3	1948.0	5.7	8.4
MST M2 - 24 x 24 x 201 - G	2	6.28	201.0	32	24	24	22												0.8
ZST M3 - 29 x 29 x 1017 - G	3	9.42	1017.9	108	29	29	26	2	63.6	127.23	8	9	10	15	9	34.4	949.1	7.7	6.0
ZST M3 - 29 x 29 x 2035 - G	3	9.42	2035.8	216	29	29	26	2	63.6	127.23	16	9	10	15	9	34.4	1967.0	7.7	12.0
MST M3 - 29 x 29 x 198 - G	3	9.42	198.0	21	29	29	26												1.2
ZST M4 - 39 x 39 x 1005 - G	4	12.57	1005.3	80	39	39	35	3	62.8	125.66	8	12	10	15	9	37.5	930.3	7.7	10.7
ZST M4 - 39 x 39 x 2010 - G	4	12.57	2010.6	160	39	39	35	3	62.8	125.66	16	12	10	15	9	37.5	1935.6	7.7	21.4
MST M4 - 39 x 39 x 201 - G	4	12.57	201.0	16	39	39	35												2.2
ZST M5 - 49 x 39 x 1005 - G	5	15.71	1005.3	64	49	39	34	3	62.8	125.66	8	12	14	20	13	30.1	945.0	11.7	13.1
ZST M5 - 49 x 39 x 2010 - G	5	15.71	2010.6	128	49	39	34	3	62.8	125.66	16	12	14	20	13	30.1	1950.4	11.7	26.2
MST M5 - 49 x 39 x 204 - G	5	15.71	204.0	13	49	39	34												2.7
ZST M6 - 59 x 49 x 1017 - G	6	18.85	1017.9	54	59	49	43	3	63.6	127.23	8	16	18	26	17	31.4	955.0	15.7	20.2
ZST M6 - 59 x 49 x 2035 - G	6	18.85	2035.8	108	59	49	43	3	63.6	127.23	16	16	18	26	17	31.4	1973.0	15.7	40.4
MST M6 - 59 x 49 x 207 - G	6	18.85	207.0	11	59	49	43												4.1
ZST M8 - 79 x 79 x 1005 - G	8	25.13	1005.3	40	79	79	71	3	62.8	125.66	8	25	22	33	21	26.6	952.0	19.7	44.3
ZST M8 - 79 x 79 x 2010 - G	8	25.13	2010.6	80	79	79	71	3	62.8	125.66	16	25	22	33	21	26.6	1957.3	19.7	88.6
MST M8 - 79 x 79 x 201 - G	8	25.13	201.0	8	79	79	71												8.9
ZST M10 - 99 x 99 x 1005 - G	10	31.42	1005.3	32	99	99	89	3	62.8	125.66	8	32	33	48	32	125.7	754.0	19.7	68.7
MST M10 - 79 x 79 x 219 - G	10	31.42	219.0	7	79	79	69												10.2
ZST M12 - 120 x 120 x 1017 - G	12	37.70	1017.9	27	120	120	108	3	63.6	127.23	8	40	39	58	38	127.2	763.4	19.7	109.0
MST M12 - 99 x 99 x 263 - G	12	37.70	263.0	7	99	99	87												19.0

¹⁾ m Module ³⁾ n Number of holes
²⁾ z Number of teeth ⁴⁾ p Pitch (p=m*π)

any other lengths on request

2.2 Technical principles

Module pitches straight toothed

Tooth rack: Pressure angle $\alpha = 20^\circ$
ground, soft or hardened

Outer surfaces: ground on all sides

Quality: 7 in accordance with DIN 3962, 3963, 3967

f_p (mm) Single pitch deviation
Module ≤ 3 : 0,007
Module > 3 : 0,009

F_p (mm) Total pitch deviation
 $F_p/1000$ (mm) 0.060 for a 1000 mm length
 $F_p/2000$ (mm) 0.075 for a 2000 mm length

Fig. 1

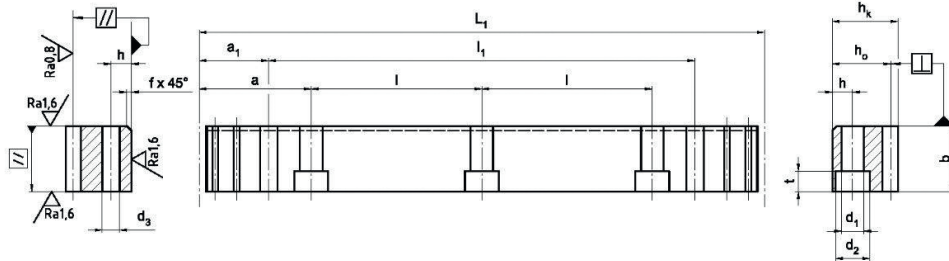


Fig. 2

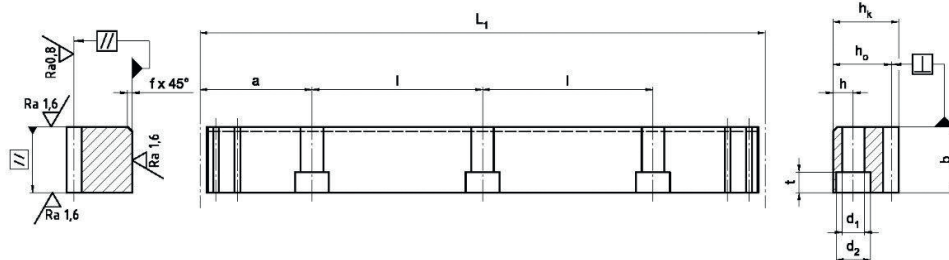
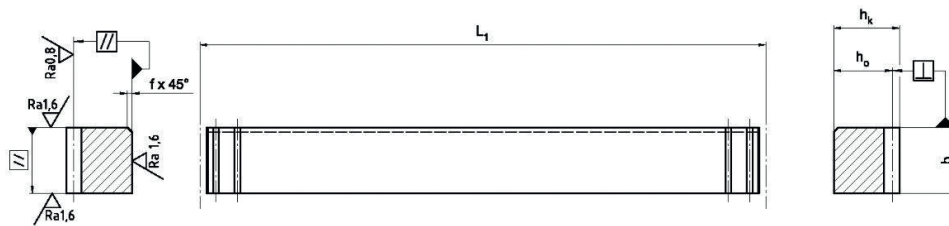


Fig. 3



Standard lengths	m ¹⁾	p ⁴⁾	L ₁	z ²⁾	b	h _k	h _o	f	a	l	n ³⁾	h	d ₁	d ₂	t	a ₁	l ₁	d ₃	Dimensions
	-	mm	mm	-	mm	mm	mm	mm	mm	mm	-	mm	mm	mm	mm	mm	mm	mm	kg
ZST M2 - 24 x 24 x 1005 - G	2	6.28	1005.3	160	24	24	22	2	62.8	125.66	8	8	7	11	7	31.3	942.7	5.7	4.2
ZST M2 - 24 x 24 x 2010 - G	2	6.28	2010.6	320	24	24	22	2	62.8	125.66	16	8	7	11	7	31.3	1948.0	5.7	8.4
MST M2 - 24 x 24 x 201 - G	2	6.28	201.0	32	24	24	22												0.8
ZST M3 - 29 x 29 x 1017 - G	3	9.42	1017.9	108	29	29	26	2	63.6	127.23	8	9	10	15	9	34.4	949.1	7.7	6.0
ZST M3 - 29 x 29 x 2035 - G	3	9.42	2035.8	216	29	29	26	2	63.6	127.23	16	9	10	15	9	34.4	1967.0	7.7	12.0
MST M3 - 29 x 29 x 198 - G	3	9.42	198.0	21	29	29	26												1.2
ZST M4 - 39 x 39 x 1005 - G	4	12.57	1005.3	80	39	39	35	3	62.8	125.66	8	12	10	15	9	37.5	930.3	7.7	10.7
ZST M4 - 39 x 39 x 2010 - G	4	12.57	2010.6	160	39	39	35	3	62.8	125.66	16	12	10	15	9	37.5	1935.6	7.7	21.4
MST M4 - 39 x 39 x 201 - G	4	12.57	201.0	16	39	39	35												2.2
ZST M5 - 49 x 39 x 1005 - G	5	15.71	1005.3	64	49	39	34	3	62.8	125.66	8	12	14	20	13	30.1	945.0	11.7	13.1
ZST M5 - 49 x 39 x 2010 - G	5	15.71	2010.6	128	49	39	34	3	62.8	125.66	16	12	14	20	13	30.1	1950.4	11.7	26.2
MST M5 - 49 x 39 x 204 - G	5	15.71	204.0	13	49	39	34												2.7
ZST M6 - 59 x 49 x 1017 - G	6	18.85	1017.9	54	59	49	43	3	63.6	127.23	8	16	18	26	17	31.4	955.0	15.7	20.2
ZST M6 - 59 x 49 x 2035 - G	6	18.85	2035.8	108	59	49	43	3	63.6	127.23	16	16	18	26	17	31.4	1973.0	15.7	40.4
MST M6 - 59 x 49 x 207 - G	6	18.85	207.0	11	59	49	43												4.1
ZST M8 - 79 x 79 x 1005 - G	8	25.13	1005.3	40	79	79	71	3	62.8	125.66	8	25	22	33	21	26.6	952.0	19.7	44.3
ZST M8 - 79 x 79 x 2010 - G	8	25.13	2010.6	80	79	79	71	3	62.8	125.66	16	25	22	33	21	26.6	1957.3	19.7	88.6
MST M8 - 79 x 79 x 201 - G	8	25.13	201.0	8	79	79	71												8.9
ZST M10 - 99 x 99 x 1005 - G	10	31.42	1005.3	32	99	99	89	3	62.8	125.66	8	32	33	48	32	125.7	754.0	19.7	68.7
MST M10 - 79 x 79 x 219 - G	10	31.42	219.0	7	79	79	69												10.2
ZST M12 - 120 x 120 x 1017 - G	12	37.70	1017.9	27	120	120	108	3	63.6	127.23	8	40	39	58	38	127.2	763.4	19.7	109.0
MST M12 - 99 x 99 x 263 - G	12	37.70	263.0	7	99	99	87												19.0

¹⁾ m Module

³⁾ n Number of holes

²⁾ z Number of teeth

⁴⁾ p Pitch ($p = m \cdot \pi$)

any other lengths on request

2.2 Technical principles

Module pitches straight toothed

Tooth rack: Pressure angle $\alpha = 20^\circ$
milled, soft

Outer surfaces: ground on all sides

Quality: 8 in accordance with DIN 3962, 3963, 3967

F_p (mm) Total pitch deviation

F_p/1000 (mm) 0,150 for a 1000 mm Length

F_p/2000 (mm) 0,225 for a 2000 mm Length

Fig. 1

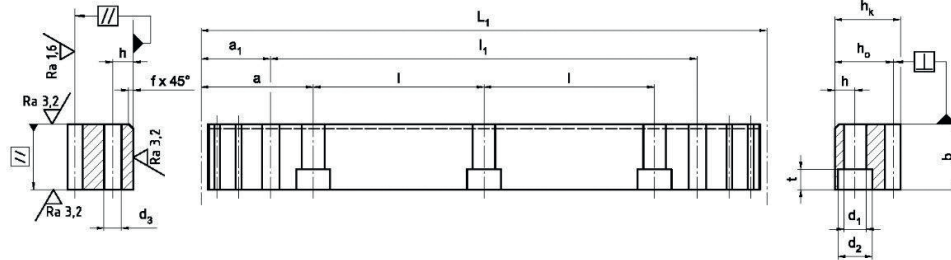


Fig. 2

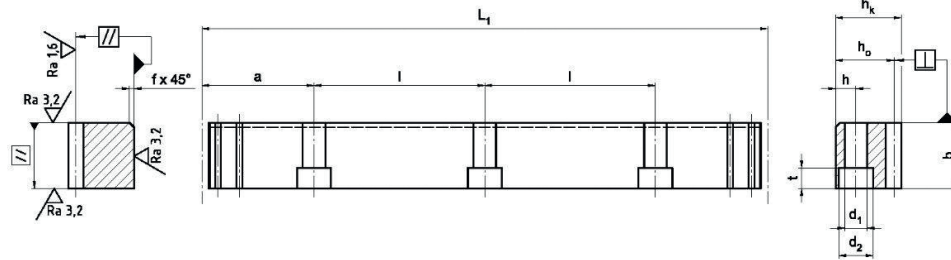
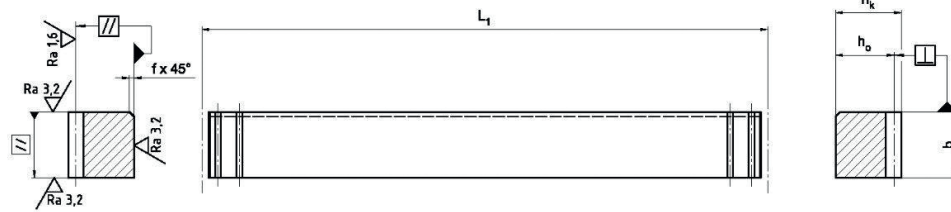


Fig. 3



Standard lengths	m ¹⁾	p ⁴⁾	L ₁	z ²⁾	b	h _k	h ₀	f	a	l	n ³⁾	h	d ₁	d ₂	t	a ₁	l ₁	d ₃	Dimensions
	-	mm	mm	-	mm	mm	mm	mm	mm	mm	-	mm	mm	mm	mm	mm	mm	mm	kg
ZST M2 - 24 x 24 x 1005 - G	2	6.28	1005.3	160	24	24	22	2	62.8	125.66	8	8	7	11	7	31.3	942.7	5.7	4.2
ZST M2 - 24 x 24 x 2010 - G	2	6.28	2010.6	320	24	24	22	2	62.8	125.66	16	8	7	11	7	31.3	1948.0	5.7	8.4
MST M2 - 24 x 24 x 201 - G	2	6.28	201.0	32	24	24	22												0.8
ZST M3 - 29 x 29 x 1017 - G	3	9.42	1017.9	108	29	29	26	2	63.6	127.23	8	9	10	15	9	34.4	949.1	7.7	6.0
ZST M3 - 29 x 29 x 2035 - G	3	9.42	2035.8	216	29	29	26	2	63.6	127.23	16	9	10	15	9	34.4	1967.0	7.7	12.0
MST M3 - 29 x 29 x 198 - G	3	9.42	198.0	21	29	29	26												1.2
ZST M4 - 39 x 39 x 1005 - G	4	12.57	1005.3	80	39	39	35	3	62.8	125.66	8	12	10	15	9	37.5	930.3	7.7	10.7
ZST M4 - 39 x 39 x 2010 - G	4	12.57	2010.6	160	39	39	35	3	62.8	125.66	16	12	10	15	9	37.5	1935.6	7.7	21.4
MST M4 - 39 x 39 x 201 - G	4	12.57	201.0	16	39	39	35												2.2
ZST M5 - 49 x 39 x 1005 - G	5	15.71	1005.3	64	49	39	34	3	62.8	125.66	8	12	14	20	13	30.1	945.0	11.7	13.1
ZST M5 - 49 x 39 x 2010 - G	5	15.71	2010.6	128	49	39	34	3	62.8	125.66	16	12	14	20	13	30.1	1950.4	11.7	26.2
MST M5 - 49 x 39 x 204 - G	5	15.71	204.0	13	49	39	34												2.7
ZST M6 - 59 x 49 x 1017 - G	6	18.85	1017.9	54	59	49	43	3	63.6	127.23	8	16	18	26	17	31.4	955.0	15.7	20.2
ZST M6 - 59 x 49 x 2035 - G	6	18.85	2035.8	108	59	49	43	3	63.6	127.23	16	16	18	26	17	31.4	1973.0	15.7	40.4
MST M6 - 59 x 49 x 207 - G	6	18.85	207.0	11	59	49	43												4.1
ZST M8 - 79 x 79 x 1005 - G	8	25.13	1005.3	40	79	79	71	3	62.8	125.66	8	25	22	33	21	26.6	952.0	19.7	44.3
ZST M8 - 79 x 79 x 2010 - G	8	25.13	2010.6	80	79	79	71	3	62.8	125.66	16	25	22	33	21	26.6	1957.3	19.7	88.6
MST M8 - 79 x 79 x 201 - G	8	25.13	201.0	8	79	79	71												8.9
ZST M10 - 99 x 99 x 1005 - G	10	31.42	1005.3	32	99	99	89	3	62.8	125.66	8	32	33	48	32	125.7	754.0	19.7	68.7
MST M10 - 79 x 79 x 219 - G	10	31.42	219.0	7	79	79	69												10.2
ZST M12 - 120 x 120 x 1017 - G	12	37.70	1017.9	27	120	120	108	3	63.6	127.23	8	40	39	58	38	127.2	763.4	19.7	109.0
MST M12 - 99 x 99 x 263 - G	12	37.70	263.0	7	99	99	87												19.0

¹⁾ m Module ³⁾ n Number of holes
²⁾ z Number of teeth ⁴⁾ p Pitch (p=m*π)

any other lengths on request

2.2 Technical principles

Module pitches straight toothed

Tooth rack: Pressure angle $\alpha = 20^\circ$
ground, nitrided

Outer surfaces: ground on all sides

Quality: 9 in accordance with DIN 3962, 3963, 3967

F_p (mm) Total pitch deviation

F_p/1000 (mm) 0.180 for a 1000 mm Length

F_p/2000 (mm) 0.270 for a 2000 mm Length

Fig. 1

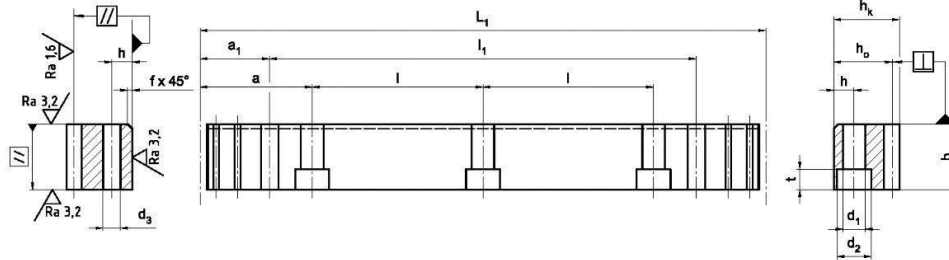


Fig. 2

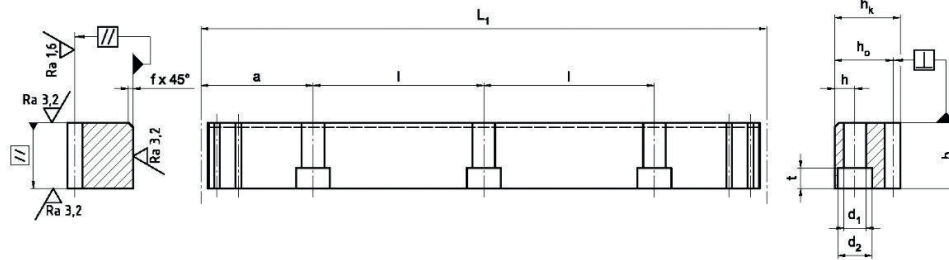
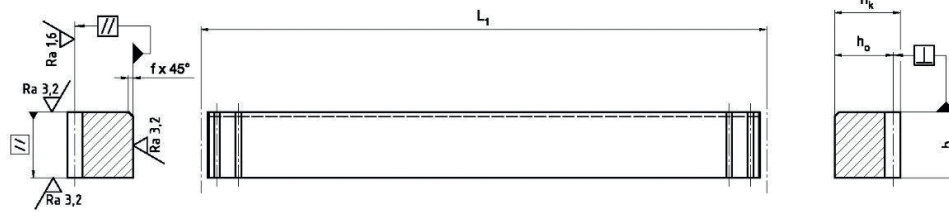


Fig. 3



Standard lengths	m ¹⁾	p ⁴⁾	L ₁	z ²⁾	b	h _k	h _o	f	a	l	n ³⁾	h	d ₁	d ₂	t	a ₁	l ₁	d ₃	Dimensions
	-	mm	mm	-	mm	mm	mm	mm	mm	mm	-	mm	mm	mm	mm	mm	mm	mm	kg
ZST M2 - 24 x 24 x 1005 - G	2	6.28	1005.3	160	24	24	22	2	62.8	125.66	8	8	7	11	7	31.3	942.7	5.7	4.2
ZST M2 - 24 x 24 x 2010 - G	2	6.28	2010.6	320	24	24	22	2	62.8	125.66	16	8	7	11	7	31.3	1948.0	5.7	8.4
MST M2 - 24 x 24 x 201 - G	2	6.28	201.0	32	24	24	22												0.8
ZST M3 - 29 x 29 x 1017 - G	3	9.42	1017.9	108	29	29	26	2	63.6	127.23	8	9	10	15	9	34.4	949.1	7.7	6.0
ZST M3 - 29 x 29 x 2035 - G	3	9.42	2035.8	216	29	29	26	2	63.6	127.23	16	9	10	15	9	34.4	1967.0	7.7	12.0
MST M3 - 29 x 29 x 198 - G	3	9.42	198.0	21	29	29	26												1.2
ZST M4 - 39 x 39 x 1005 - G	4	12.57	1005.3	80	39	39	35	3	62.8	125.66	8	12	10	15	9	37.5	930.3	7.7	10.7
ZST M4 - 39 x 39 x 2010 - G	4	12.57	2010.6	160	39	39	35	3	62.8	125.66	16	12	10	15	9	37.5	1935.6	7.7	21.4
MST M4 - 39 x 39 x 201 - G	4	12.57	201.0	16	39	39	35												2.2
ZST M5 - 49 x 39 x 1005 - G	5	15.71	1005.3	64	49	39	34	3	62.8	125.66	8	12	14	20	13	30.1	945.0	11.7	13.1
ZST M5 - 49 x 39 x 2010 - G	5	15.71	2010.6	128	49	39	34	3	62.8	125.66	16	12	14	20	13	30.1	1950.4	11.7	26.2
MST M5 - 49 x 39 x 204 - G	5	15.71	204.0	13	49	39	34												2.7
ZST M6 - 59 x 49 x 1017 - G	6	18.85	1017.9	54	59	49	43	3	63.6	127.23	8	16	18	26	17	31.4	955.0	15.7	20.2
ZST M6 - 59 x 49 x 2035 - G	6	18.85	2035.8	108	59	49	43	3	63.6	127.23	16	16	18	26	17	31.4	1973.0	15.7	40.4
MST M6 - 59 x 49 x 207 - G	6	18.85	207.0	11	59	49	43												4.1
ZST M8 - 79 x 79 x 1005 - G	8	25.13	1005.3	40	79	79	71	3	62.8	125.66	8	25	22	33	21	26.6	952.0	19.7	44.3
ZST M8 - 79 x 79 x 2010 - G	8	25.13	2010.6	80	79	79	71	3	62.8	125.66	16	25	22	33	21	26.6	1957.3	19.7	88.6
MST M8 - 79 x 79 x 201 - G	8	25.13	201.0	8	79	79	71												8.9
ZST M10 - 99 x 99 x 1005 - G	10	31.42	1005.3	32	99	99	89	3	62.8	125.66	8	32	33	48	32	125.7	754.0	19.7	68.7
MST M10 - 79 x 79 x 219 - G	10	31.42	219.0	7	79	79	69												10.2
ZST M12 - 120 x 120 x 1017 - G	12	37.70	1017.9	27	120	120	108	3	63.6	127.23	8	40	39	58	38	127.2	763.4	19.7	109.0
MST M12 - 99 x 99 x 263 - G	12	37.70	263.0	7	99	99	87												19.0

¹⁾ m Module

³⁾ n Number of holes

²⁾ z Number of teeth

⁴⁾ p Pitch (p=m*π)

any other lengths on request

2.2 Technical principles

Module pitches straight toothed

Tooth rack: Pressure angle $\alpha = 20^\circ$
milled, induction hardened

Outer surfaces: ground on all sides

Quality: 11 in accordance with DIN 3962, 3963, 3967

F_p (mm) Total pitch deviation

F_p/1000 (mm) 0,220 for a 1000 mm Length

F_p/2000 (mm) 0,330 for a 2000 mm Length

Fig. 1

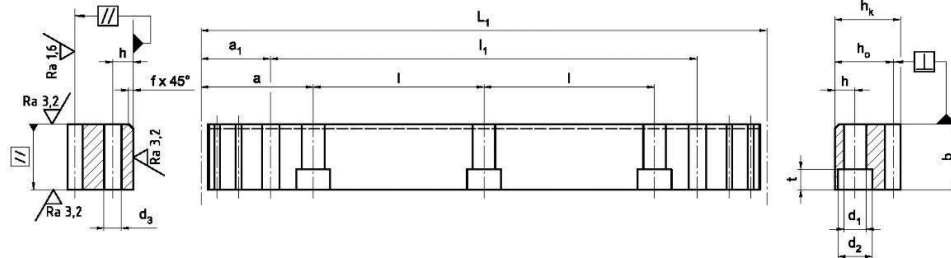


Fig. 2

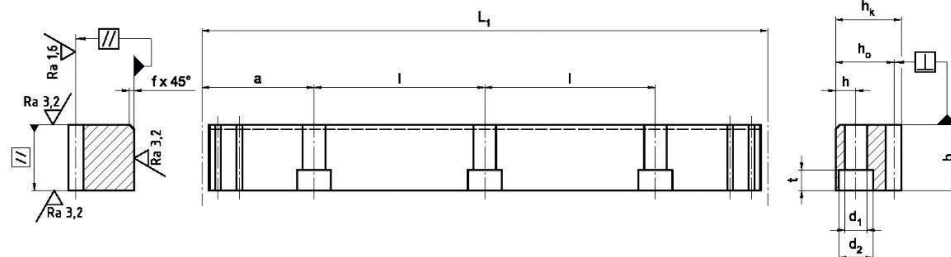
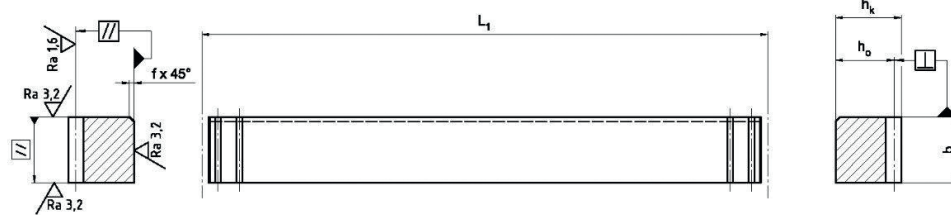


Fig. 3



Standard lengths	m ¹⁾	p ⁴⁾	L ₁	z ²⁾	b	h _k	h _o	f	a	l	n ³⁾	h	d ₁	d ₂	t	a ₁	l ₁	d ₃	Dimensions
	-	mm	mm	-	mm	mm	mm	mm	mm	mm	-	mm	mm	mm	mm	mm	mm	mm	kg
ZST M2 - 24 x 24 x 1005 - G	2	6.28	1005.3	160	24	24	22	2	62.8	125.66	8	8	7	11	7	31.3	942.7	5.7	4.2
ZST M2 - 24 x 24 x 2010 - G	2	6.28	2010.6	320	24	24	22	2	62.8	125.66	16	8	7	11	7	31.3	1948.0	5.7	8.4
MST M2 - 24 x 24 x 201 - G	2	6.28	201.0	32	24	24	22												0.8
ZST M3 - 29 x 29 x 1017 - G	3	9.42	1017.9	108	29	29	26	2	63.6	127.23	8	9	10	15	9	34.4	949.1	7.7	6.0
ZST M3 - 29 x 29 x 2035 - G	3	9.42	2035.8	216	29	29	26	2	63.6	127.23	16	9	10	15	9	34.4	1967.0	7.7	12.0
MST M3 - 29 x 29 x 198 - G	3	9.42	198.0	21	29	29	26												1.2
ZST M4 - 39 x 39 x 1005 - G	4	12.57	1005.3	80	39	39	35	3	62.8	125.66	8	12	10	15	9	37.5	930.3	7.7	10.7
ZST M4 - 39 x 39 x 2010 - G	4	12.57	2010.6	160	39	39	35	3	62.8	125.66	16	12	10	15	9	37.5	1935.6	7.7	21.4
MST M4 - 39 x 39 x 201 - G	4	12.57	201.0	16	39	39	35												2.2
ZST M5 - 49 x 39 x 1005 - G	5	15.71	1005.3	64	49	39	34	3	62.8	125.66	8	12	14	20	13	30.1	945.0	11.7	13.1
ZST M5 - 49 x 39 x 2010 - G	5	15.71	2010.6	128	49	39	34	3	62.8	125.66	16	12	14	20	13	30.1	1950.4	11.7	26.2
MST M5 - 49 x 39 x 204 - G	5	15.71	204.0	13	49	39	34												2.7
ZST M6 - 59 x 49 x 1017 - G	6	18.85	1017.9	54	59	49	43	3	63.6	127.23	8	16	18	26	17	31.4	955.0	15.7	20.2
ZST M6 - 59 x 49 x 2035 - G	6	18.85	2035.8	108	59	49	43	3	63.6	127.23	16	16	18	26	17	31.4	1973.0	15.7	40.4
MST M6 - 59 x 49 x 207 - G	6	18.85	207.0	11	59	49	43												4.1
ZST M8 - 79 x 79 x 1005 - G	8	25.13	1005.3	40	79	79	71	3	62.8	125.66	8	25	22	33	21	26.6	952.0	19.7	44.3
ZST M8 - 79 x 79 x 2010 - G	8	25.13	2010.6	80	79	79	71	3	62.8	125.66	16	25	22	33	21	26.6	1957.3	19.7	88.6
MST M8 - 79 x 79 x 201 - G	8	25.13	201.0	8	79	79	71												8.9
ZST M10 - 99 x 99 x 1005 - G	10	31.42	1005.3	32	99	99	89	3	62.8	125.66	8	32	33	48	32	125.7	754.0	19.7	68.7
MST M10 - 79 x 79 x 219 - G	10	31.42	219.0	7	79	79	69												10.2
ZST M12 - 120 x 120 x 1017 - G	12	37.70	1017.9	27	120	120	108	3	63.6	127.23	8	40	39	58	38	127.2	763.4	19.7	109.0
MST M12 - 99 x 99 x 263 - G	12	37.70	263.0	7	99	99	87												19.0

¹⁾ m Module ³⁾ n Number of holes
²⁾ z Number of teeth ⁴⁾ p Pitch (p=m*π)

any other lengths on request

2.3 Technical principles

Metric pitch, straight toothed

Tooth rack: Pressure angle $\alpha = 20^\circ$
ground

Outer surfaces: ground on all sides

Quality: 6 in accordance with DIN 3962, 3963, 3967

f_p (mm) Single pitch deviation
Module ≤ 3 : 0.006
Module > 3 : 0.008

F_p (mm) Total pitch deviation
 $F_p/1000$ (mm) 0,035 for a 1000 mm Length

Fig. 1

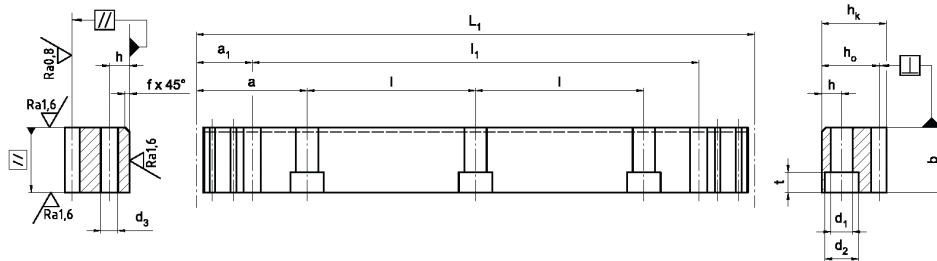


Fig. 2

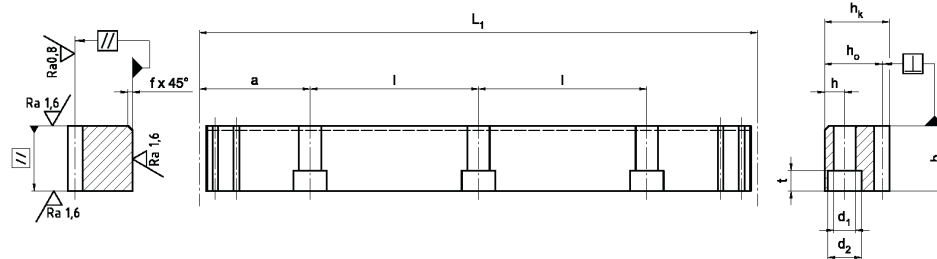
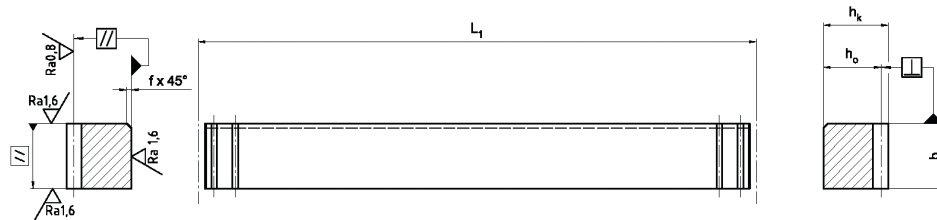


Fig. 3



Standard lengths	p ¹⁾ mm	m	L ₁ mm	z ²⁾	b mm	h _k mm	h _o mm	f mm	a mm	l mm	n ³⁾	h mm	d ₁ mm	d ₂ mm	t mm	a ₁ mm	l ₁ mm	d ₃ mm	Dimensions kg	
ZST T5 - 24 x 24 x 600 - G	5	1,592	600	120	24	24	22,41	2	60	120	5	8	7	11	7	25	550	5.7	2.5	
ZST T5 - 24 x 24 x 1200 - G			1200	240													1150		5.0	
MST T5 - 24 x 24 x 120 - G	5	1,592	120	24	24	24	22,41													0.8
ZST T10 - 29 x 29 x 600 - G	10	3,183	600	60	29	29	25,82	2	60	120	5	9	10	15	9	25	550	7.7	3.6	
ZST T10 - 29 x 29 x 1200 - G			1200	120													1150		7.2	
MST T10 - 29 x 29 x 200 - G	10	3,183	200	20	29	29	25,82													1.2

¹⁾ m Module

³⁾ n Number of holes

²⁾ z Number of teeth

⁴⁾ p Pitch ($p=m \cdot \pi$)

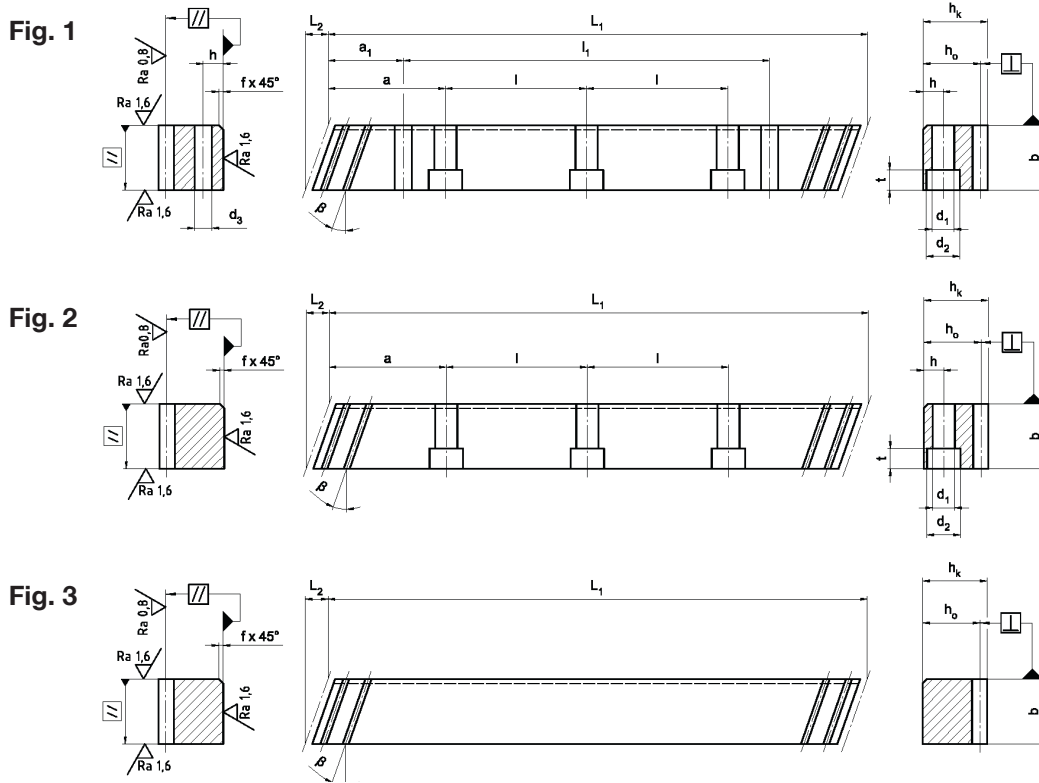
any other lengths on request

2.4 Technical principles

Module pitches helical toothed

Tooth rack: Pressure angle $\alpha = 20^\circ$
ground
Outer surfaces: ground on all sides
Material: X90CrMoV18

Quality: 6 in accordance with DIN 3962, 3963, 3967
 f_p (mm) Single pitch deviation
Module ≤ 3 : 0.006
Module > 3 : 0.008
 F_p (mm) Total pitch deviation
 $F_p/1000$ (mm) 0,035 for a 1000 mm Length



Standard lengths	m ¹⁾	p _s ⁴⁾ mm	L ₁ mm	L ₂ mm	z ²⁾	b mm	h _k mm	h ₀ mm	f mm	a mm	l mm	n ³⁾	h mm	d ₁ mm	d ₂ mm	t mm	a ₁ mm	l ₁ mm	d ₃ mm	Dimensions kg
ZST M2 - 24 x 24 x 1000 - S	2	6.67	1000.0	8.5	150	24	24	22	2	62.5	125.00	8	8	7	11	7	31.7	936.6	5.7	4.1
MST M2 - 24 x 24 x 200 - SL	2	6.67	200.0	8.5	30	24	24	22												0.8
ZST M3 - 29 x 29 x 1000 - S	3	10.00	1000.0	10.3	100	29	29	26	2	62.5	125.00	8	9	10	15	9	35.0	930.0	7.7	5.9
MST M3 - 29 x 29 x 200 - SL	3	10.00	200.0	10.3	20	29	29	26												1.2
ZST M4 - 39 x 39 x 1000 - S	4	13.33	1000.0	13.8	75	39	39	35	3	62.5	125.00	8	12	10	15	9	33.3	933.4	7.7	10.7
MST M4 - 39 x 39 x 200 - SL	4	13.33	200.0	13.8	15	39	39	35												2.2
ZST M5 - 49 x 39 x 1000 - S	5	16.67	1000.0	17.4	60	49	39	34	3	62.5	125.00	8	12	14	20	13	37.5	925.0	11.7	13.0
MST M5 - 49 x 39 x 200 - SL	5	16.67	200.0	17.4	12	49	39	34												2.7

¹⁾ m Module

³⁾ n Number of holes

²⁾ z Number of teeth

⁴⁾ p_s End pitch (p_s=m*τ/cos β)

β = 19.5283° (19°31'42")

any other lengths on request

2.5 Technical principles

Module pitches straight toothed

Tooth rack: Pressure angle $\alpha = 20^\circ$
ground
Outer surfaces: ground on all sides
Material: X90CrMoV18

Quality: 6 in accordance with DIN 3962, 3963, 3967
 f_p (mm) Single pitch deviation
Module ≤ 3 : 0.006
Module > 3 : 0.008
 F_p (mm) Total pitch deviation
 $F_p/1000$ (mm) 0,035 for a 1000 mm Length

Fig. 1

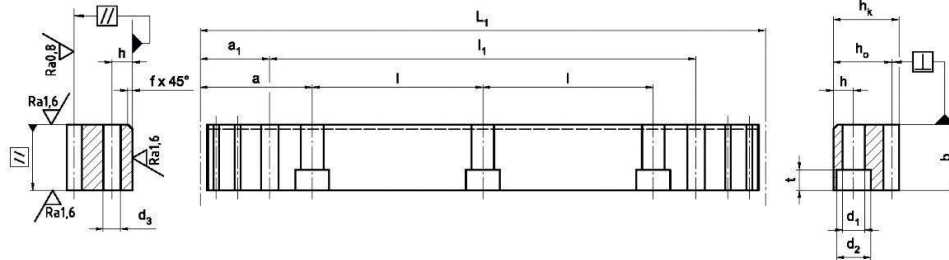


Fig. 2

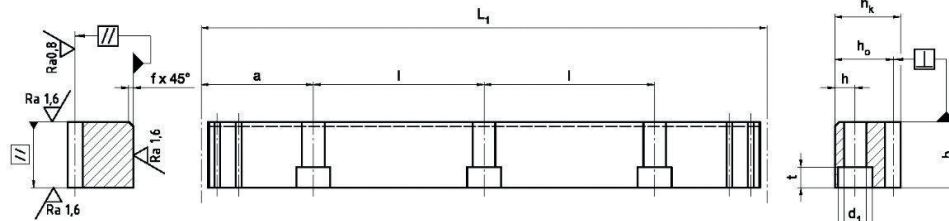
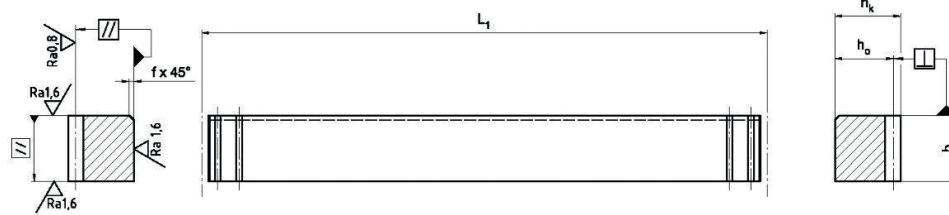


Fig. 3



Standard lengths	m ¹⁾	p ⁴⁾	L ₁	z ²⁾	b	h _k	h ₀	f	a	l	n ³⁾	h	d ₁	d ₂	t	a ₁	l ₁	d ₃	Dimensions
	-	mm	mm	-	mm	mm	mm	mm	mm	mm	-	mm	mm	mm	mm	mm	mm	mm	kg
ZST M2 - 24 x 24 x 1005 - G	2	6.28	1005.3	160	24	24	22	2	62.8	125.66	8	8	7	11	7	31.3	942.7	5.7	4.2
MST M2 - 24 x 24 x 201 - G	2	6.28	201.0	32	24	24	22												0.8
ZST M3 - 29 x 29 x 1017 - G	3	9.42	1017.9	108	29	29	26	2	63.6	127.23	8	9	10	15	9	34.4	949.1	7.7	6.0
MST M3 - 29 x 29 x 198 - G	3	9.42	198.0	21	29	29	26												1.2
ZST M4 - 39 x 39 x 1005 - G	4	12.57	1005.3	80	39	39	35	3	62.8	125.66	8	12	10	15	9	37.5	930.3	7.7	10.7
MST M4 - 39 x 39 x 201 - G	4	12.57	201.0	16	39	39	35												2.2
ZST M5 - 49 x 39 x 1005 - G	5	15.71	1005.3	64	49	39	34	3	62.8	125.66	8	12	14	20	13	30.1	945.0	11.7	13.1
MST M5 - 49 x 39 x 204 - G	5	15.71	204.0	13	49	39	34												2.7

¹⁾ m Module ³⁾ n Number of holes
²⁾ z Number of teeth ⁴⁾ p Pitch (p=m*π)

any other lengths on request

2.6 Technical principles

Metric pitch, straight toothed

Tooth rack: Pressure angle $\alpha = 20^\circ$
ground
Outer surfaces: ground on all sides
Material: X90CrMoV18

Quality: 6 in accordance with DIN 3962, 3963, 3967
 f_p (mm) Single pitch deviation
Module ≤ 3 : 0.006
Module > 3 : 0.008
 F_p (mm) Total pitch deviation
 $F_p/1000$ (mm) 0,035 for a 1000 mm Length

Fig. 1

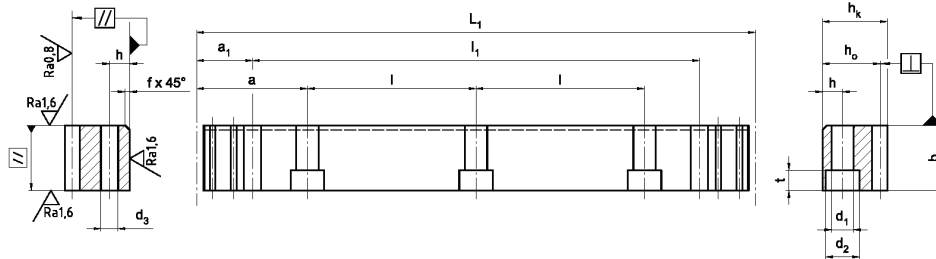


Fig. 2

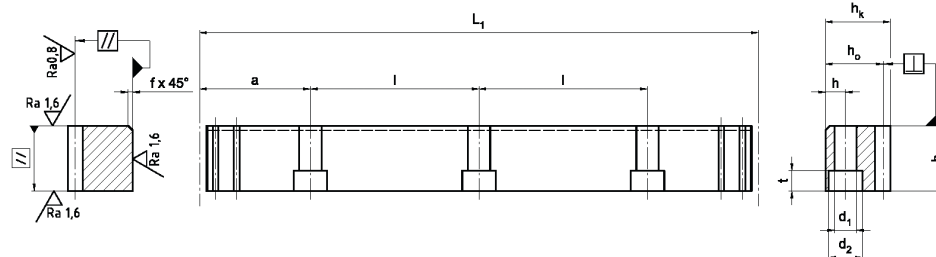
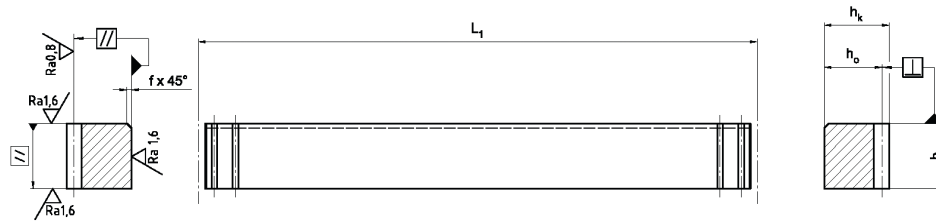


Fig. 3



Standard lengths	$p^{1)}$ mm	m	L_1 mm	$z^{2)}$ -	b mm	h_k mm	h_o mm	f mm	a mm	l mm	$n^{3)}$ -	h mm	d_1 mm	d_2 mm	t mm	a_1 mm	l_1 mm	d_3 mm	Dimensions kg
ZST T5 - 24 x 24 x 600 - G	5	1,592	600	120	24	24	22,41	2	60	120	5	8	7	11	7	25	550	5,7	2.5
ZST T5 - 24 x 24 x 1200 - G			1200	240													1150		5.0
MST T5 - 24 x 24 x 120 - G	5	1,592	120	24	24	24	22,41												0.8
ZST T10 - 29 x 29 x 600 - G	10	3,183	600	60	29	29	25,82	2	60	120	5	9	10	15	9	25	550	7,7	3.6
ZST T10 - 29 x 29 x 1200 - G			1200	120													1150		7.2
MST T10 - 29 x 29 x 200 - G	10	3,183	200	20	29	29	25,82												1.2

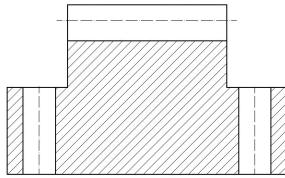
¹⁾ m Module ³⁾ n Number of holes
²⁾ z Number of teeth ⁴⁾ p Pitch ($p=m \cdot \tau$)

any other lengths on request

2.7 Technical principles

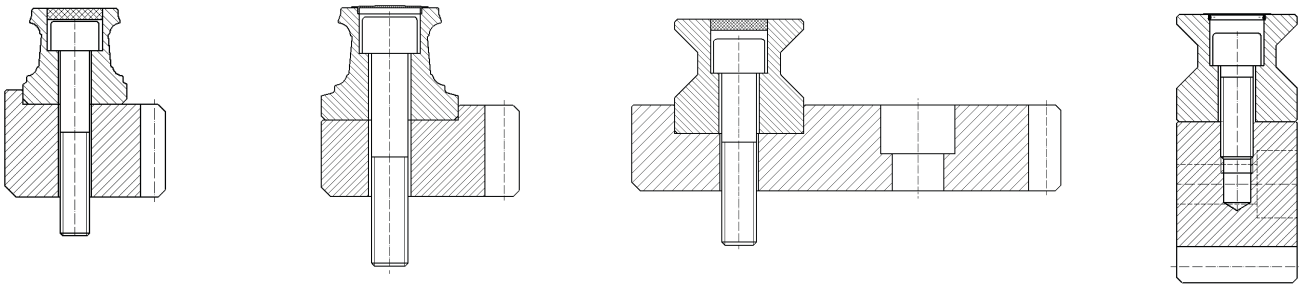
Customised gear racks

Any gear racks and guide racks can be made to a customer's drawing as long as they are within the specifications listed below.

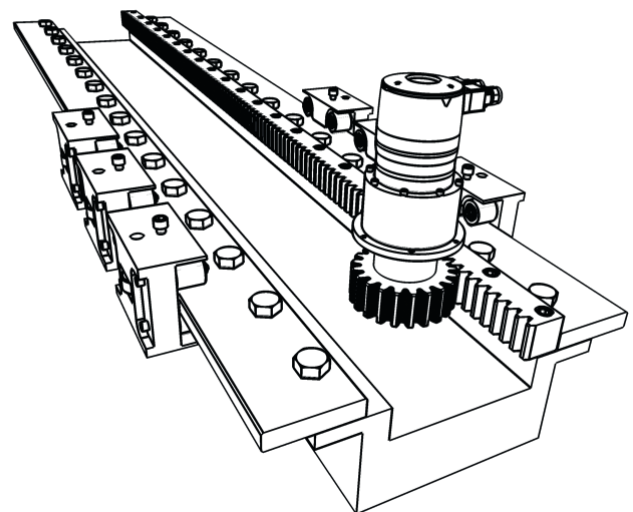
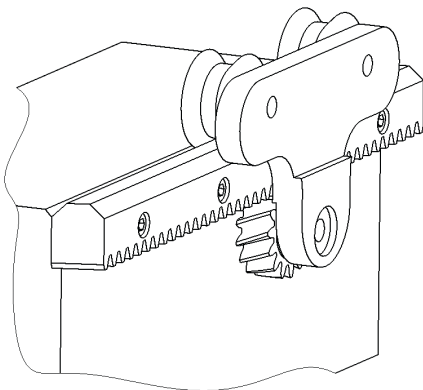


Unit weight:	max. 500 kg
Length:	max. 3000 mm
Tooth rack:	Modules 2 ... 16 Metric 5 mm ... 20 mm
Helix angle β	-30° ... +30° Left and right ascending
Material:	C45, 42CrMo4 V, 16MnCr5 X90CrMoV18 (stainless steel)
Hardening process:	Induction hardening Case hardening Through hardening Nitriding
Best accuracy:	Q4

Space-saving combination for guide and drive component.



Gear rack and prismatic guide combined



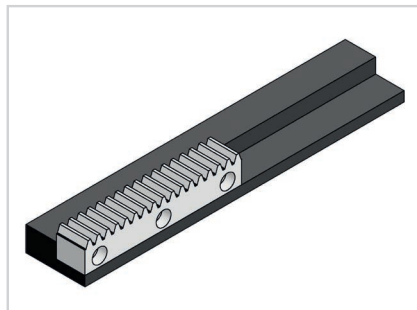
3.1 Installation

Gear rack fitting instructions / lubrication

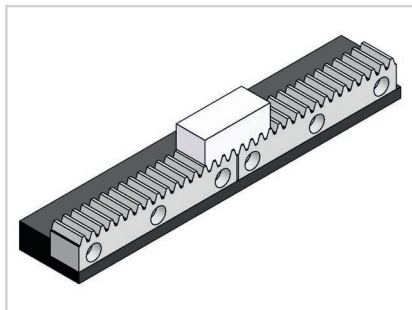
Gear racks can be assembled in any lengths.

When assembling the spacing between two gear racks must be pitch precise.

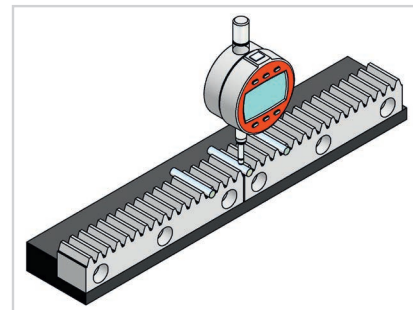
Dowels may be needed for gear racks shorter than 1m.



- Aligning the first gear rack
- Tighten the screws with a torque wrench.
- The torque depends on the friction condition and strength class of the screws.
- For soft or induction hardened gear racks use screws with a strength class of 10.9. For case and through hardened gear racks use strength class 12.9.



- Align the next gear rack with a mounting plate.
- Screw the gear rack on.



- Using a measuring roller check the height deviation at the transition point and if necessary change the position of one gear rack.
- Check that the gear racks are parallel to each other.
- Finally, insert the pins if necessary.

Lubrication - instructions for use

Adequate lubrication using a lubricant adapted to the operating conditions is required to maintain the functionality of the rack drive. Lubrication protects from wear and corrosion and reduces friction.

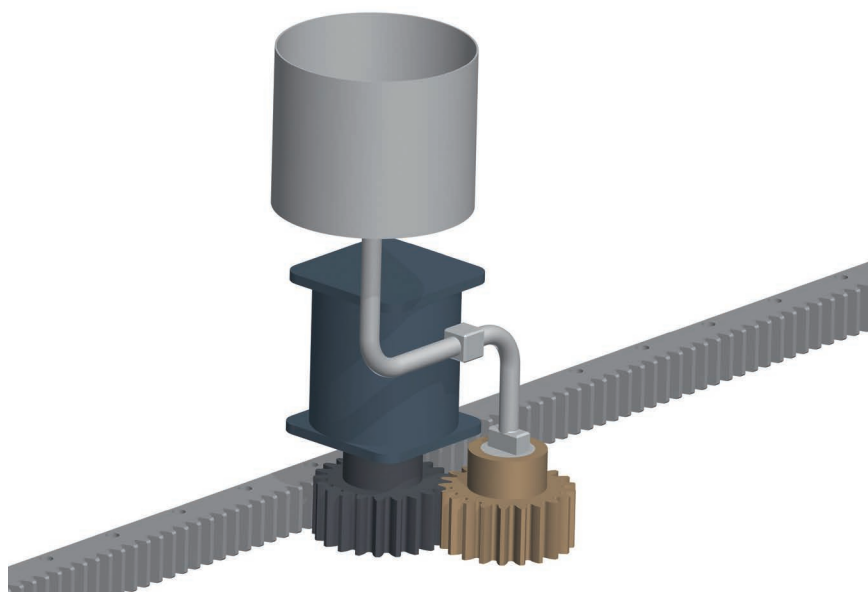
Apart from the initial lubrication during assembly, the machine must be lubricated regularly during operation.

Normally electrically-driven lubrication cartridges are used for lubrication. Lubrication greases NLGI 00 to NLGI 0 are applied to the drive pinion or the gear rack with a felt pinion.

A typical lubricant is Klüber Microlube GB 0.

Too little lubrication shortens the service life of the drive system. Therefore, always ensure that the machine is lubricated adequately.

The detailed version of our mounting instruction is available under www.schneeberger.com/downloads.



4.1 Order description

Standard gear racks

Standard gear racks			___	ZST	M6	- 59x49x1000	-S	-I	-6	-D
Quantity										
Model	ZST									
Tooth rack	M ___	modular								
	T ___	metric, in mm								
Size	b x h _k x L ₁ in mm									
Tooth rack	S	inclined to the right, 19.5283°								
	G	straight								
Hardness	C	Material 16MnCr5, case hardened								
	I	Material C45, induction hardened								
	W	Material C45, soft								
	N	Material 42CrMo4 V, nitrided								
	V	Material 42CrMo4 V, tempered								
	H	Material X90CrMoV18 (stainless steel), through hardened								
Accuracy	4, 5, 6, 7	ground								
	6	ground								
	8	milled, soft								
	9	nitrided								
	11	milled, induction hardened								
Drilled holes	D	with pin and fixing holes				Fig. 1				
	OP	without pin holes				Fig. 2				
	OH	without holes				Fig. 3				

Standard assembly tool			___	MST	M6	-	-SL	
Quantity								
Model	MST							
Tooth rack	M ___	modular						
	T ___	metric, in mm						
Grösse	b x h _k x L ₁ in mm							
Tooth rack	SL	inclined to the left, 19.5283°						
	G	straight						

4.1 Order description

Customised gear racks

Customised gear racks			___	ZST	M4	-60x50x1820	-SL	-C	-5	-DX	-sp	
Quantity												
Model	ZST											
Tooth rack	M ___	modular										
	T ___	metric, in mm										
Size	b x h _k x L ₁	in mm										
Tooth rack	S	inclined to the right										
	SL	inclined to the left										
	G	straight										
Hardness	C	Material 16MnCr5, case hardened										
	O	Material 16 MnCr5, nitrided										
	I	Material C45, induction hardened										
	W	Material C45, soft										
	M	Material 42CrMo4 V induction hardened										
	N	Material 42CrMo4 V, nitrided										
	V	Material 42CrMo4 V, tempered										
	H	Material X90CrMoV18 (stainless steel), through hardened										
	S	special material										
Accuracy	4, 5, 6, 7	ground										
	8	milled, soft										
	9	nitrided										
	10, 11	milled, induction hardened										
Drilled holes	D	with pin and fixing holes							Fig. 1			
	OP	without pin holes							Fig. 2			
	OH	without holes							Fig. 3			
	-X	half hole pitch (l _x = ½ * l)										
Special features	sp	with special features as in the drawing										

Customised assembly tool			___	MST	M4			-SR	-sp	
Quantity										
Model	MST									
Tooth rack	M ___	modular								
	T ___	metric, in mm								
Size	b x h _k x L ₁	in mm								
Tooth rack	SL	inclined to the left								
	SR	inclined to the right								
	G	straight								
Special features	sp	with special features as in the drawing								

5.1 Quality

Quality

All gear racks are manufactured on modern machine tools. The induction and through hardening is also done in-house.



It goes without saying that all SCHNEEBERGER production sites are ISO 9001 certified.

All process steps are self inspected by the machine operator. If required a measurement report is compiled on the quality of the gear rack.

The tooth rack profile complies with DIN 867, the tolerances for accuracy classes are based on DIN 3962, 3963 and 3967.

The tooth rack is measured on a CNC measuring machine.

The special feature of the SCHNEEBERGER standard tooth rack is the tip chamfer. This reduces the risk of injury to a minimum.

Our concern is to provide the best industrial companies with the best products and services because that is the key to our customers' success.



EUROPE

AUSTRIA

Haberkorn GmbH
6961 Wolfurt
Phone: +43 5574 695-0
Fax: +43 5574 695-99
info.wolfurt@haberkorn.com

BULGARIA / MACEDONIA

Atlas Technik EOOD
Hippodroma, Bl. 139B, Eing. A, App. 6
1612 Sofia, PB 51
Bulgarien
Phone +359 2 859 76 81
Fax +359 2 859 76 81
Mobil +359 8 852 32 595
E-Mail: al_popoff@techno-link.com

CROATIA

Haberkorn CRO d.o.o.
10431 Sveta Nedelja
Phone +385 1 333 5870
Fax. +385 1 337 3902
E-Mail: info@haberkorn.hr

CZECH REPUBLIC

INOMECH s.r.o. .
Martina Koláře 2118
390 02 Tábor
Phone +420 381 252 223
E-Mail: inomech@inomech.com

DENMARK

HERSTAD + PIPER A/S
Jernholmen 48c
2650 Hvidovre
Phone +45 367 740 00
Fax +45 367 777 40
E-Mail: mail@herstad-piper.dk

FINLAND

EIE Maskin OY
PL, 80 Asematie 1
10601 Tammissaari
Phone +358 192 239 100
Fax +358 192 239 199
E-Mail: info@eie.fi

FRANCE

Region Rhône-Alpes
Groupe BARET
6 avenue du 11 novembre 1918
69200 Venissieux
Phone +33 4 78 77 32 32
Fax +33 4 78 00 90 00
E-Mail: contact@baret.fr

**Regions Ile de France,
Normandie, Bretagne**

Groupe LECHEVALIER
56 rue Jean Mermoz
Parc d'activités de la Bretèque
76230 Bois-Guillaume Cedex
Phone +33 2 35 12 65 65
Fax +33 2 35 59 89 97
E-Mail: contact@lechevalier-sa.com

Region Nord Pas de Calais

LEFRANC LTL «Le Panetier»
35, rue Pierre Martin
Parc d'Activités de l'Inquétrie
62280 Saint Martin Boulogne
Phone +33 3 21 99 51 51
Fax +33 3 21 99 51 50
E-Mail: lefranc.boulogne@lefranc-sa.fr

GERMANY

BGP-Blazevic Geradlinige Präzisionstechnik
Stipo Blazevic
Hochstiftstrasse 31
93055 Regensburg
Phone +49 941 569 996 20
Fax +49 941 569 950 97
Mobil +49 151 401 126 25
E-Mail: info@bpg-blazevic.de

EUROPE

GREAT BRITAIN

LG Motion Ltd.
Unit 1 Telford Road
Houndmills Estate, Basingstoke
Hampshire RG21 6YU
Phone +44 012 563 656 00
Fax +44 012 563 656 45
E-Mail: info@g-motion.co.uk

HUNGARY

Haberkorn Kft.
Asztalos Sándor u.12
Budapest, 1087
Phone +36 13030325
Fax +36 1/3030262
E-Mail: office@haberkorn.hu

ITALY

Nadella S.r.l.
Via Melette, 16
20128 Milano
Phone +39 022 709 329 7
Fax +39 022 551 768
E-Mail: customer.service@nadella.it

NORWAY

Elmeko AS (s. EIE Maskin)
Tvetenveien 164
0671 Oslo
Phone +47 675 722 70
Fax +47 675 722 80
E-Mail: elmeko@elmeko.no

POLAND

TECHNIKA LINIOWA
Rollico Rolling Components
Ul. Cegielniana 21
42-700 Lubliniec
Phone +48 343 510 430
Fax +48 343 510 431
E-Mail: rollico@rollico.com

ROMANIA

Meximpex SRL
4, Burebista Blvd.,
bl. D13 sc. A et 2 ap. 9-10
031108 Bucharest
Phone +40 213 166 843 /44
Fax +40 213 166 846
E-Mail: office@meximpex.ro

SERBIA/MONTENEGRO

Haberkorn d.o.o.
Kralja Petra I, 59
21203 Veternik,
Phone +381 21 3 101 555
Fax +381 21 3 101 554
E-Mail: office@haberkorn.rs

SLOVAKIA

KBM, s.r.o.
Juraj Hajovsky
Zitná 13
010 04 Zilina
Phone +421 417 070 324
Fax +421 417 070 333
Mobile +421 090 585 1465
E-Mail: jhajovsky@kbm.sk

SLOVENIA / BOSNIA HERZEGOVINA

Haberkorn d.o.o.
Vodovodna ul. 7
2000 Maribor
Phone +386 2 320 67 10
Fax +386 2 320 67 30
E-Mail: info@haberkorn.si

SPAIN / PORTUGAL

TECNOMECA-KI DELAN-DEXIS
Pol Industrial Itziar
20829 DEBA (Gipuzkoa)
Phone +34 943 199 201
Phone +34 943 199 273
E-Mail: tecnomeca@tecnomeca.com

EUROPE

SWEDEN

EIE Maskin AB
Box 7
12421 Bandhagen
Phone +46 87 278 800
Fax +46 87 278 899
E-Mail: eie@eie.se

TURKEY

Birlik Rulman (Paz.ltd.sti.)
Mumhane Cad. No: 16
80030 Karakoy-Istanbul
Phone +90 212 249 54 95
Fax +90 212 244 21 40
E-Mail: birlik@birlikrulman.com

Mustafa Kozanlı Mühendislik Ltd. Şti.
Çalı Kavşağı Alaaddinbey Cad. No: 7
16130 Nilüfer / BURSA
Phone +90 224 443 26 40
Fax +90 224 443 26 39
E-Mail: satis@kozanli.com.tr

ASIA

KOREA

Intech Automation Inc.
1-1108, Ace Hitech City
55-20 Mullaee-Dong 3-Ga
Youngdeungpo-Ku
150-972 Seoul
Phone +82 2 3439 0070 - 4
Fax +82 2 3439 0080
E-Mail: intech@intechautomation.co.kr

Lineartech Inc.
369 Geumgok-ri, Dongtan-myeon
Hwaseong-si, Gyeonggi-do
445-811 Korea
Phone +82 31 274 0485
Fax +82 31 274 0486
E-Mail: lineartech@chol.com

TAIWAN / REPUBLIC OF CHINA

Ever Bright Precison Ltd.
1 F,nr.52
Lane 10 Chi-hu Road
114 Taipei
Phone +886 226 595 586
Fax +886 226 595 587
E-Mail: sales@everbright.com.tw

AUSTRALIA / NEW ZEALAND

RJM Engineering Supplies
Tamar Street 13
VIC 3134 Ringwood
Phone +61 398 794 881
Fax +61 398 793 700
E-Mail: sales@rjmeng.com.au

SOUTH AFRICA

Fischli & Fuhrmann Ltd.
P.O Box 253
1600 Isando Gauteng
Phone +27 119 745 571
Fax +27 119 745 574
E-Mail: info@ffu.co.za

SOUTH AMERICA

Ibatech Tecnologia Ltda.
Av. Amazonas, 976
90240 542 Porto Alegre RS
Brazil
Phone +55 513 337 14 81
Fax +55 513 337 52 65
E-Mail: service@framar-corp.com

PROSPECTUSES

- COMPANY BROCHURE
- CUSTOMIZED BEARINGS
- GEAR RACKS
- LINEAR BEARINGS and RECIRCULATING UNITS
- MINERAL CASTING SCHNEEBERGER
- MINI-X MINIRAIL / MINISCALE PLUS / MINISLIDE
- MONORAIL and AMS profiled linear guideways with integrated measuring system
- MONORAIL and AMS application catalog
- POSITIONING SYSTEMS
- SLIDES



SCHNEEBERGER COMPANIES

SWITZERLAND

SCHNEEBERGER AG
St. Urbanstrasse 12
4914 Roggwil/BE

Phone +41 62 918 41 11
Fax +41 62 918 41 00

E-Mail:
info-ch@schneeberger.com

JAPAN

Nippon SCHNEEBERGER K.K.
Crane Toranomon Bldg 7F
3-20-5 Toranomon, Minato-ku
Tokyo 105-0001

Phone +81 3 6435 7474
Fax +81 3 6435 7475

E-Mail:
info-j@schneeberger.com

JAPAN

日本シュネーベルガー株式会社
〒105-0001
東京都港区虎ノ門3-20-5
クレイン虎ノ門ビル7F

電話 03 6435 7474
ファクス 03 6435 7475

Eメール:
info-j@schneeberger.com

GERMANY

SCHNEEBERGER GmbH
Gräfenau
75339 Höfen/Enz

Phone +49 7081 782 0
Fax +49 7081 782 124

E-Mail:
info-d@schneeberger.com

CHINA

SCHNEEBERGER (Shanghai) Co., Ltd.
Rm 606, Shang Gao International
Building
No. 137 XianXia Road
200051 Shanghai

Phone +86 21 6209 0037 / 27
Fax +86 21 6209 0102

E-Mail:
info-cn@schneeberger.com

CHINA

施耐博格 (上海) 传动技术有限公司
上海市长宁区
仙霞路137号盛高国际
大厦606室, 上海 200051

电话 +86 21 6209 0027
传真 +86 21 6209 0102

邮箱:
info-cn@schneeberger.com

ITALY

SCHNEEBERGER S.r.l.
Via Soldani 10
21021 Angera (VA)

Phone +39 0331 93 2010
Fax +39 0331 93 1655

E-Mail:
info-i@schneeberger.com

KOREA

SCHNEEBERGER Korea Ltd.
UNION Center Building
1004, 10th FL
310, Gangnam-Daero,
Gangnam-Gu, Seoul,
Korea 135-754

Phone +82 2 554 2971
Fax +82 2 554 3971

E-Mail:
info-kr@schneeberger.com

KOREA

서울시 강남구 강남대로 310
유니온센터 빌딩 1004호
우편번호 135-754

전화 +82 2 554 2971
팩스 +82 2 554 3971

이메일:
info-kr@schneeberger.com

USA

SCHNEEBERGER Inc.
44 Sixth Road,
Woburn, MA 01801-1759

Phone +1 781 271 0140
Fax +1 781 275 4749

E-Mail:
info-usa@schneeberger.com

SINGAPORE

SCHNEEBERGER LINEAR
TECHNOLOGY PTE. Ltd.
160 Paya Lebar Road, #05-04
Orion Industrial Building
409022 Singapore

Phone +65 6841 2385
Fax +65 6841 3408

E-Mail:
info-sg@schneeberger.com

INDIA

SCHNEEBERGER India Pvt. Ltd.
406, Satra Plaza,
Palm Beach Road, Sector 19D Vashi,
400 703 New Mumbai

Phone +91 22 6461 0646
+91 22 6461 1756

E-Mail:
info-in@schneeberger.com

SCHNEEBERGER MINERAL CASTING

CZECH REPUBLIC

SCHNEEBERGER
Mineralgusstechnik s.r.o
Prumyslový park 32/20
350 02 Cheb – Dolní Dvory

Phone +420 354 400 941
Fax +420 354 400 940

E-Mail:
info-mineralguss@schneeberger.com

CHINA

SCHNEEBERGER Changzhou
Precision Systems Co. Ltd.
137 Hanjiang Road
Changzhou New district
213000 Changzhou, Jiangsu

Phone +86 519 8988 3938
Fax +86 519 8988 5115

E-Mail:
info-mineralcasting@schneeberger.com

CHINA

施耐博格 (常州) 测试系统有限公司
汉江路137, 常州新区, 常州213022

电话 +86 519 8988 3938
传真 +86 519 8988 5115

邮箱:
info-mineralcasting@schneeberger.com



SCHNEEBERGER SALES DEPARTMENTS

AUSTRIA AND SOUTH EAST EUROPE

Mobile +43 676 935 1035

E-Mail:
info-a@schneeberger.com

ISRAEL

Mobile +972 5 0551 7920

E-Mail:
info-il@schneeberger.com

BENELUX

Mobile +31 6 5326 3929

E-Mail:
info-nl@schneeberger.com

POLAND, SLOVAKIA, CZECH REPUBLIC

Mobile +420 6 0278 4077

E-Mail:
info-cz@schneeberger.com

DENMARK, SWEDEN

Mobile +31 6 5326 3929

E-Mail:
info-nl@schneeberger.com

RUSSIA, BELARUS, UKRAINE

Mobile +7 985 960 85 53
Mobile +38 050 407 6789
Mobile +37 529 860 0410

E-Mail:
info-ru@schneeberger.com

FRANCE

Mobile +33 6 0941 6269

E-Mail:
info-f@schneeberger.com

SPAIN, PORTUGAL ANDORRA

Mobile +34 69 559 05 99

E-Mail:
info-es@schneeberger.com

GREAT BRITAIN

Mobile +44 77 8814 5645

E-Mail:
info-uk@schneeberger.com

TURKEY

Mobile +90 545 320 83 55

E-Mail:
info-tr@schneeberger.com